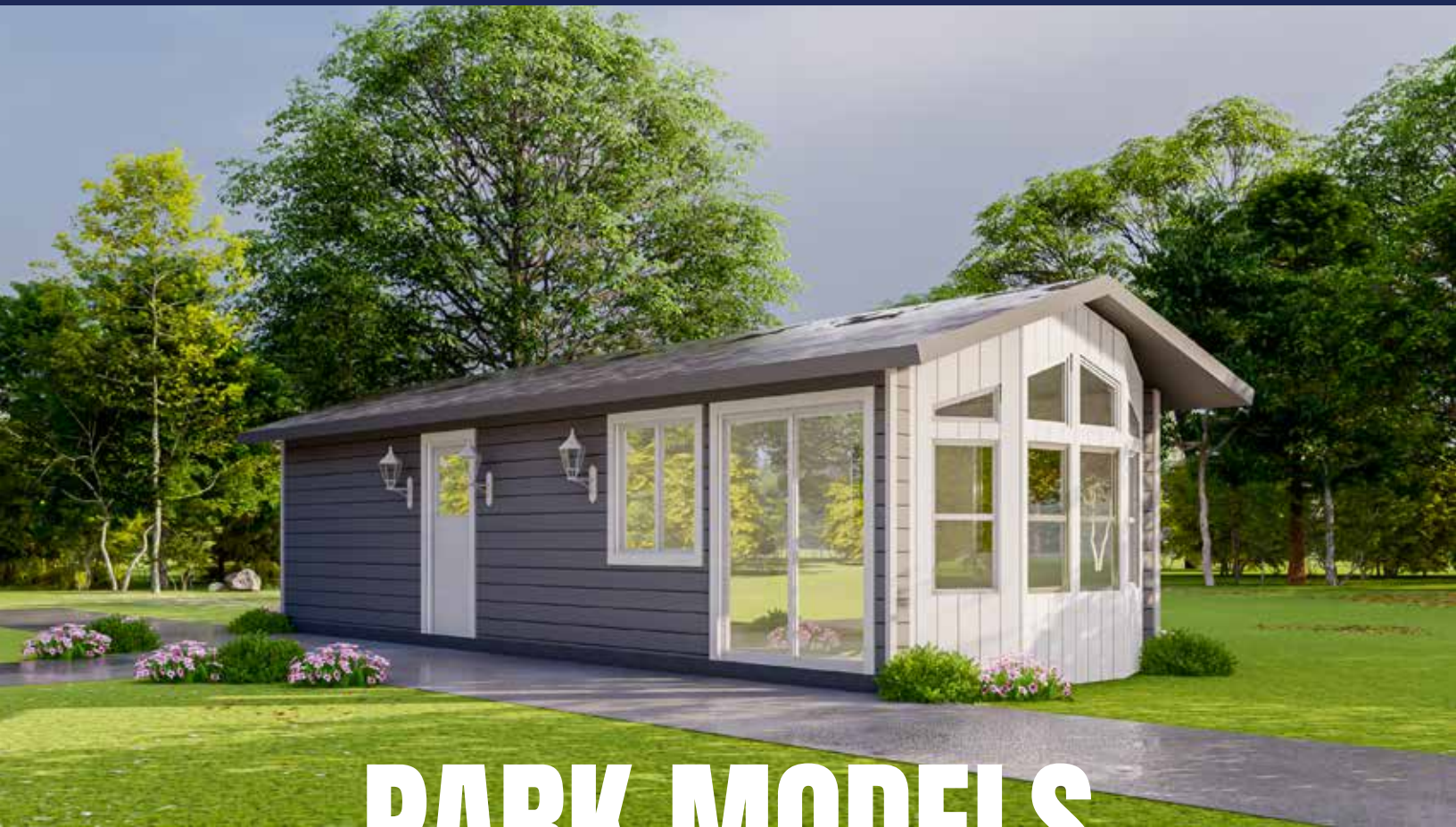




COUNTRYSIDE HOMES & RV



PARK MODELS



COUNTRYSIDE HOMES & RV

Building your dream home has never been easier.

We have taken what can be a stressful and complicated process for you, and turned it into a well orchestrated system that ensures your home arrives on time and you are moving in sooner.

DESIGN CHOICES

Customized for You.

Our experienced team will work closely with you to make sure we meet and exceed your expectations.

SERVICE

Only the Highest Quality.

We understand the importance of choosing a company that's experienced, dependable and affordable.

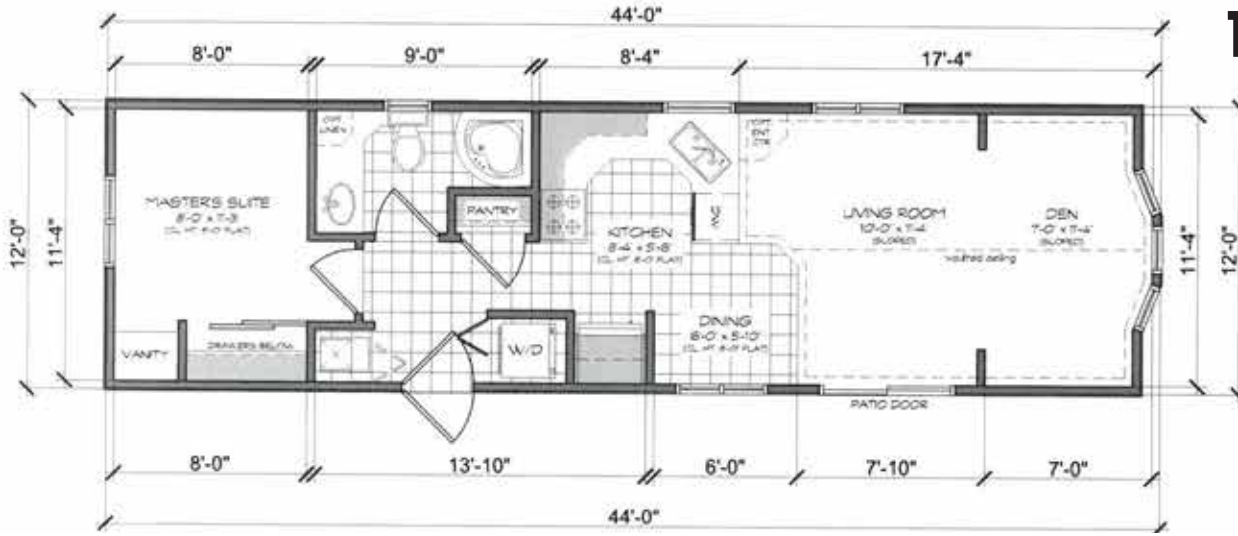
CONSTRUCTION

Building Options.

We exceed all Z241 CSA Standards to give you the highest quality Park Model

FLOOR PLANS

The Forest Den



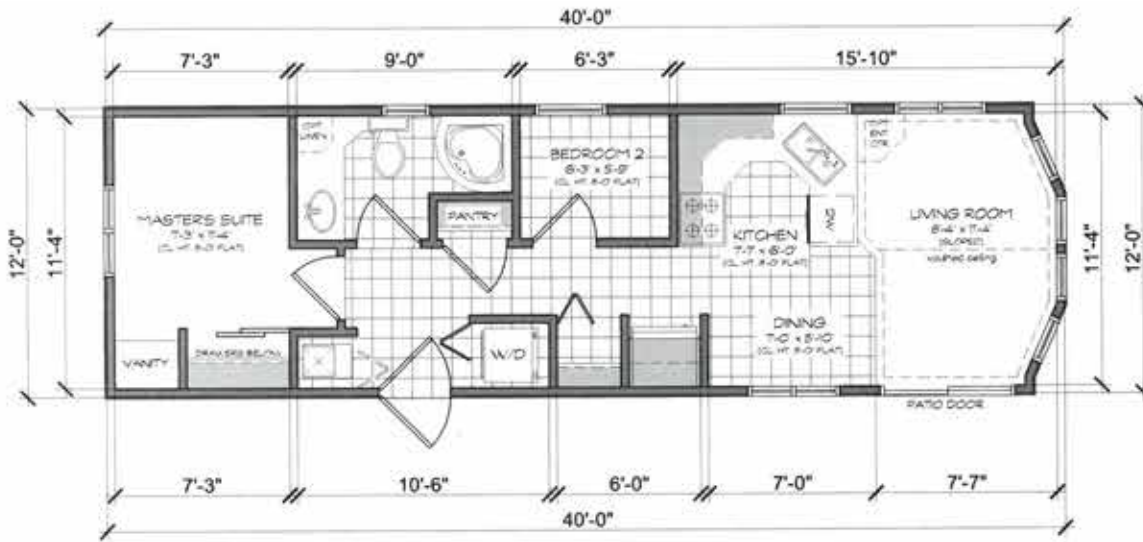
The Lazy River



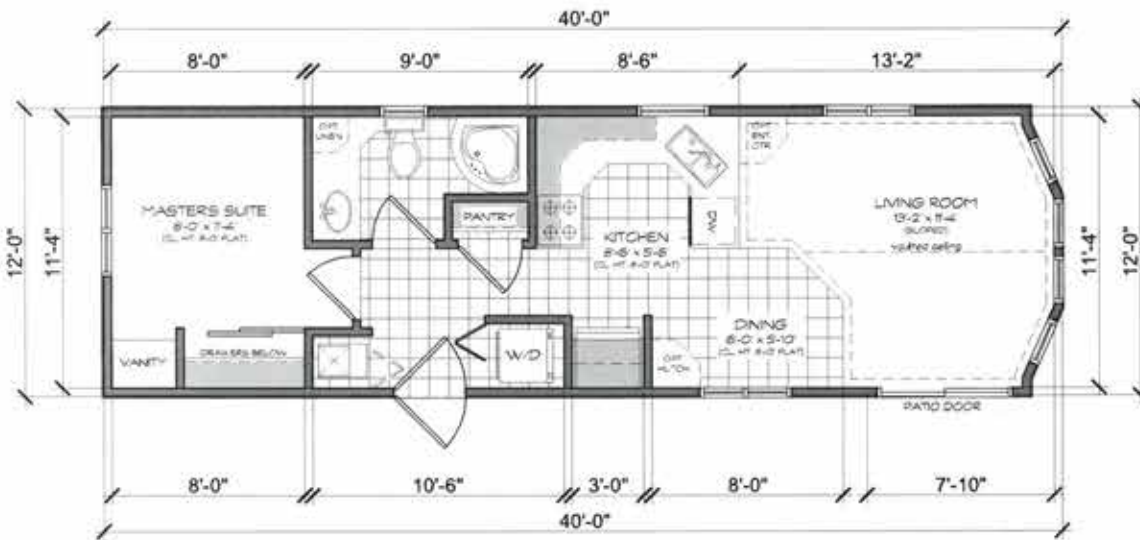
The Valleyside



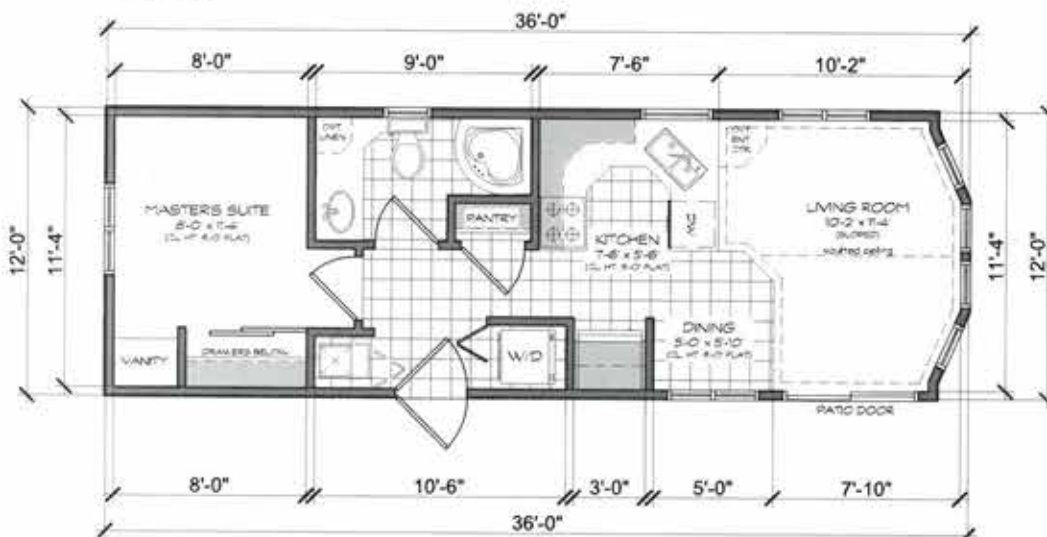
FLOOR PLANS



The Harbourside

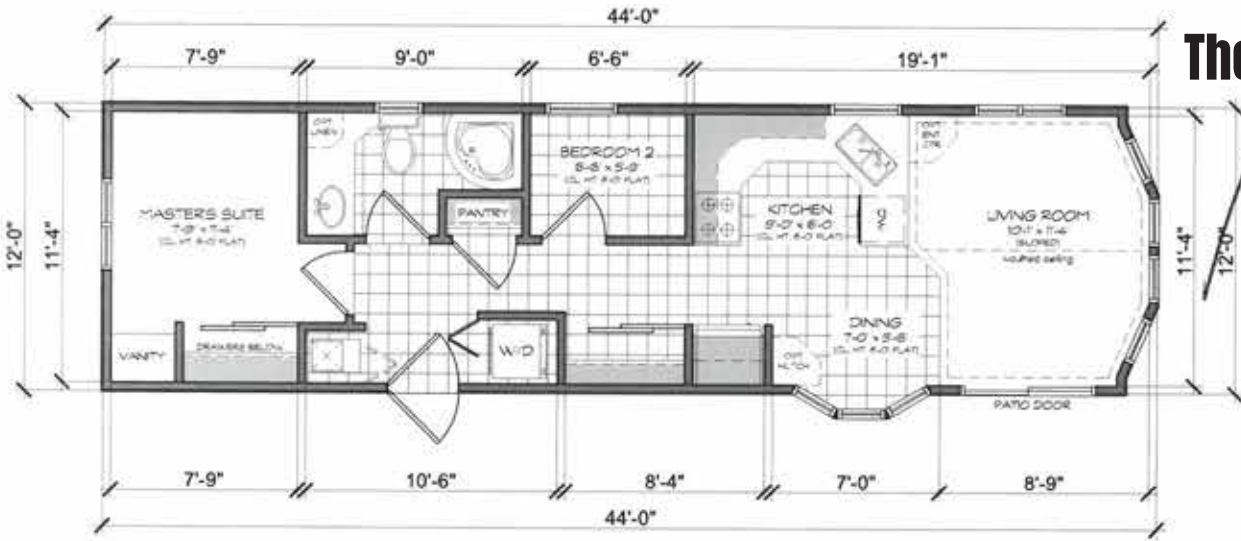


The Weekender

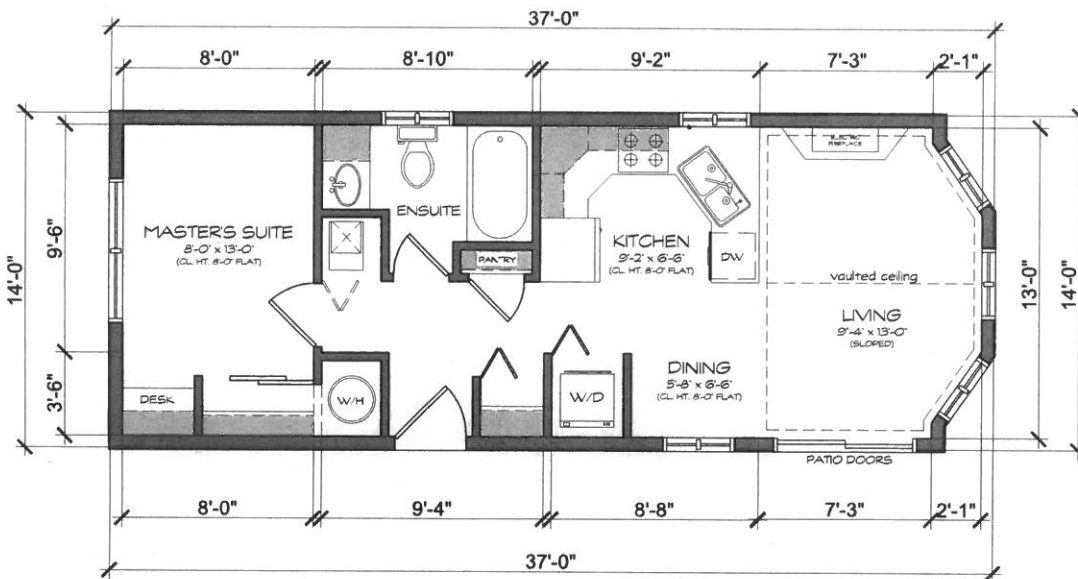


The Shoreline

FLOOR PLANS



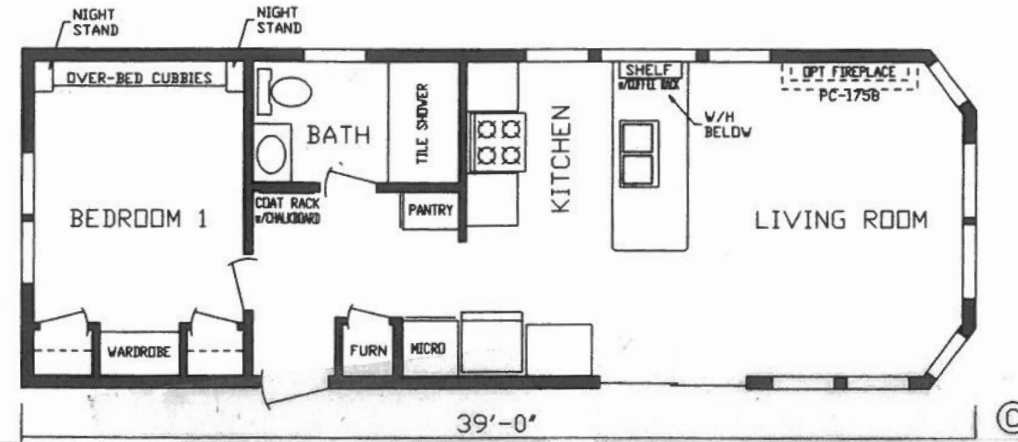
The Mountaineer



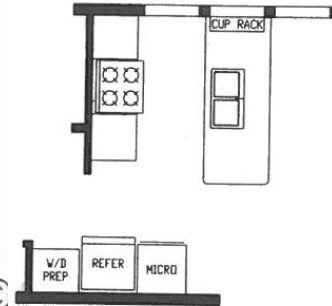
The Coastal

FLOOR PLANS

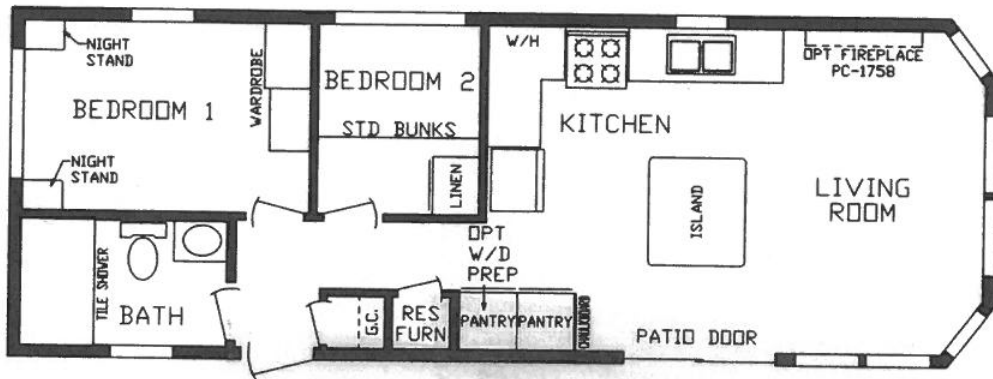
14 Wides



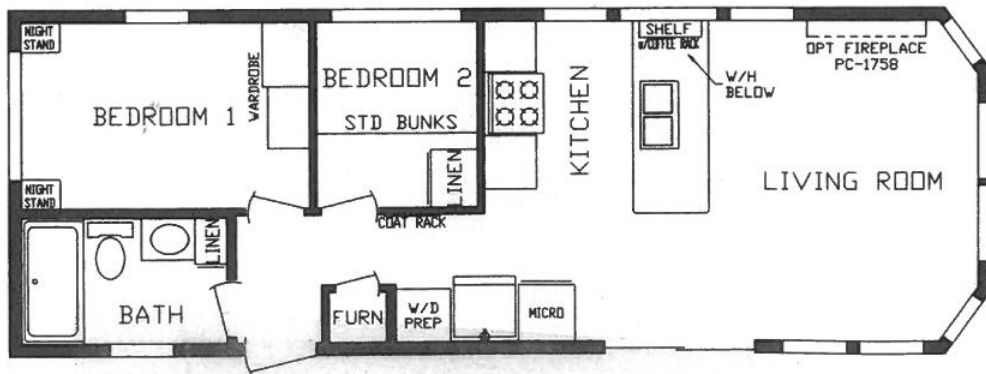
The Hudson



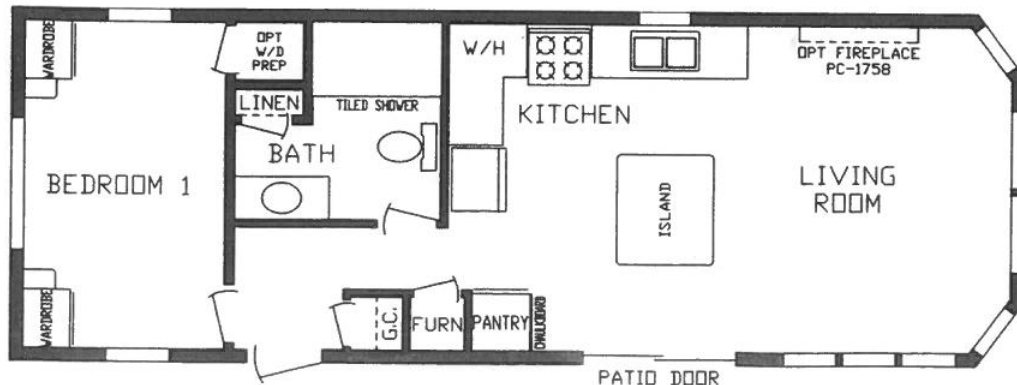
**R01 Opt
Washer/Dryer
Prep**



The Niagara



The Bow



The Caroline



COUNTRYSIDE HOMES & RV

Standard Spec: Signature Series Park Models

Roof

Limited Lifetime Warranty Asphalt Shingles
7/16 OSB Sheathing C/W H-Clips
Ice & Weather Shield at Roof Perimeter
Pre-Engineered Roof Trusses
R20 Bat Insulation
6-Mil Poly Vapor Barrier

Exterior Walls

Vinyl Siding
Air Barrier (House Wrap)
3/8 OSB Sheathing Glued and Stapled
2x4 Exterior Walls 16-inch on Center
R12 Fiberglass Batt Insulation
6-Mil Poly Vapor Barrier
Hurricane Straps

Floors

Pre-Engineered Open Web Floor Truss
LVL Rim Boards
23/32-Inch T&G OSB Floor Sheathing, Glued &
Screwed (or Equivalent.)
R20 Spray Foam in the bottom of home

Interior Walls & Finish

½-Inch Drywall Board Primed and Painted
2x4 Studs At 16-inch On Center
4.5-Inch Baseboards Throughout (MDF)
Flat Style Trim throughout
30-Inch Doors Pre-Finished Decorative
Vinyl Plank Floor
One Row of Tile Around Tub/Shower

Many upgrade options available

Cabinetry

Shaker Style Foil Profile Cabinets
Laminate Countertops
Solid Melamine Back Board Behind All
Soft Close Doors and Drawers

Fixtures

Stainless Steel Kitchen Sink
Comfort Height Toilet
White Ceramic Vanity Sinks
Toilet Paper Holder and Towel Bar

Heating And Ventilation

80 CFM Bathroom Fan Connected to Humidistat
45,000 BTU Propane Furnace
20 Gal Electric HWT

Appliances

Stainless Steel propane range
18 cubic foot Stainless Steel Refrigerator
Stainless Steel Range Hood

Plumbing

1 Cold Hose Bibs, As Per Plan
Shut Off Valves for Sinks and Toilets
Single Lever Kitchen and Vanity Fixtures
Manifold Waterline System
Single Piece Tub/Shower

Electrical

50 AMP, 110/220V Single Phase
GFCI Counter Plugs (20A)
Pot Lights Recessed in Soffits at Entries
1 Exterior GFCI Plugs
Smoke Alarms / CO 2 Combo
5 LED pot lights in the kitchen area

Your first choice for Park Models, Custom Cottages, and Modular Homes.



2205 24A Crescent
Bowden, Alberta T0M 0K0
(403) 224-2255

CountrysidehomesRV.com