



**COUNTRYSIDE
HOMES & RV**



Signature Series Modular Homes



COUNTRYSIDE HOMES & RV



Building your dream home has never been easier.

We have taken what can be a stressful and complicated process for you, and turned it into a well orchestrated system that ensures your home arrives on time and you are moving in sooner.

DESIGN CHOICES

Customized for You.

Our experienced team will work closely with you to make sure we meet and exceed your expectations.

SERVICE

Only the Highest Quality.

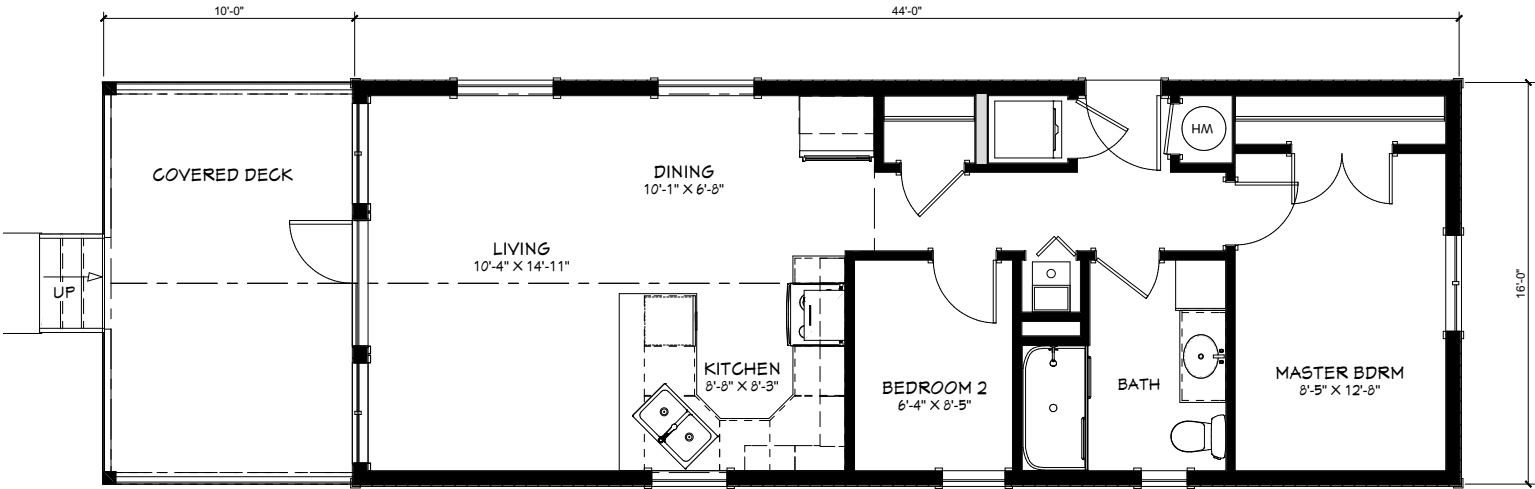
We understand the importance of choosing a company that's experienced, dependable and affordable.

CONSTRUCTION

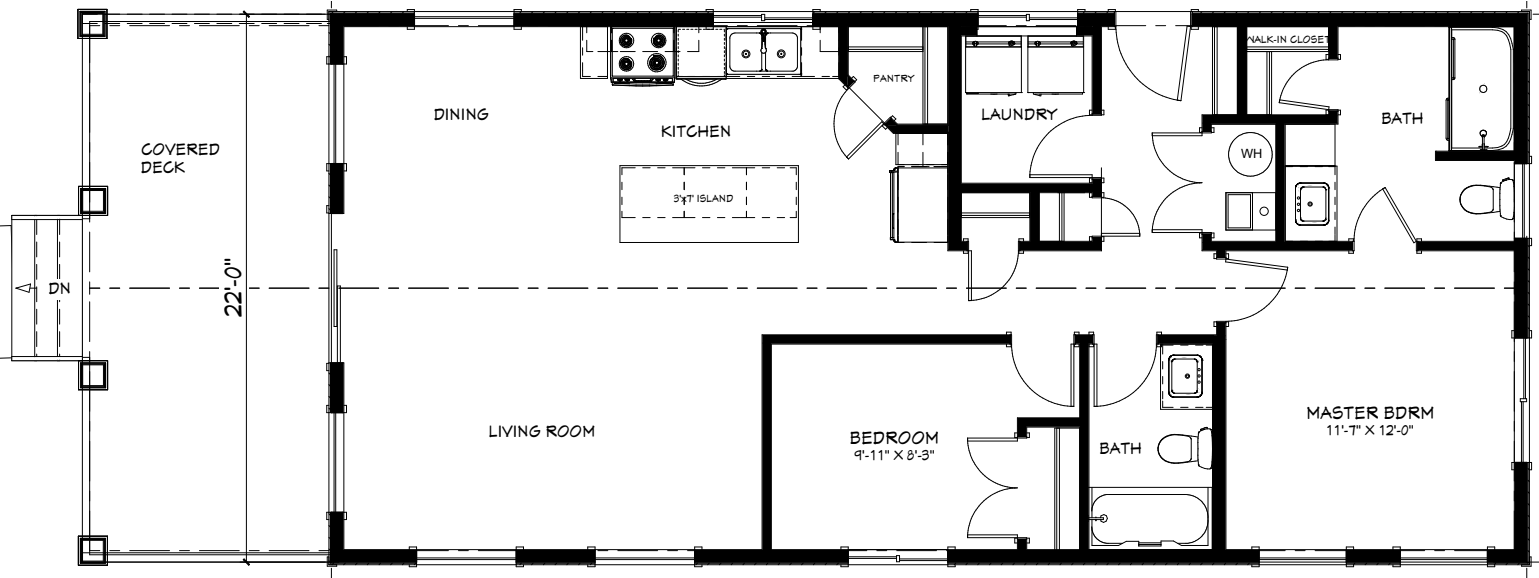
Building Options.

We exceed all A277 CSA Standards to give you the highest quality Modular Homes.

The Brookside - 16 x 44 (not including 10 Ft porch) - 704 Sq. Ft.

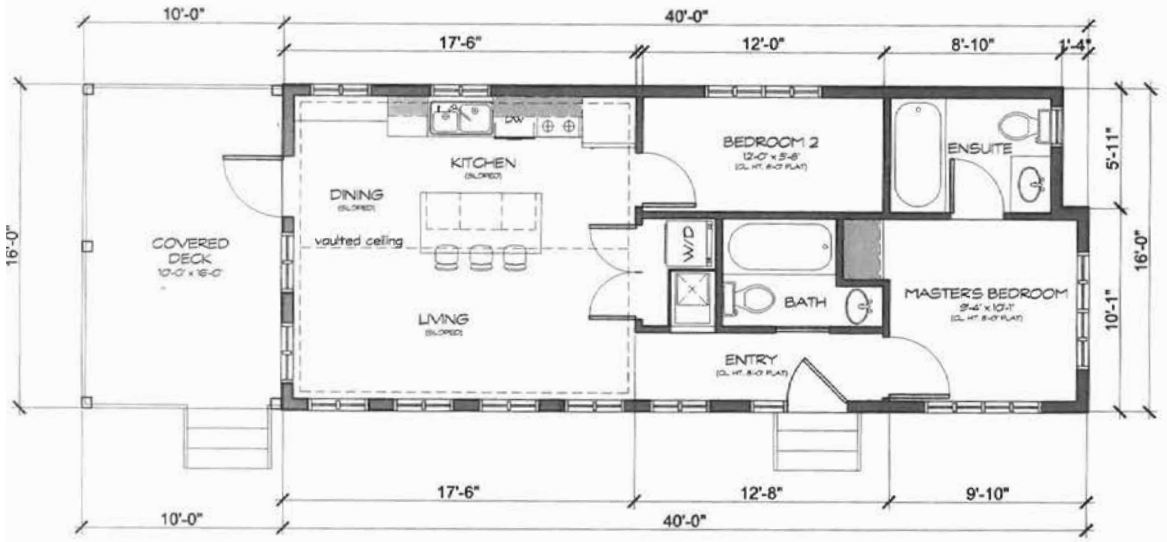


The Countryside - 22 x 48 (not including 10 Ft porch) - 1056 Sq. Ft.

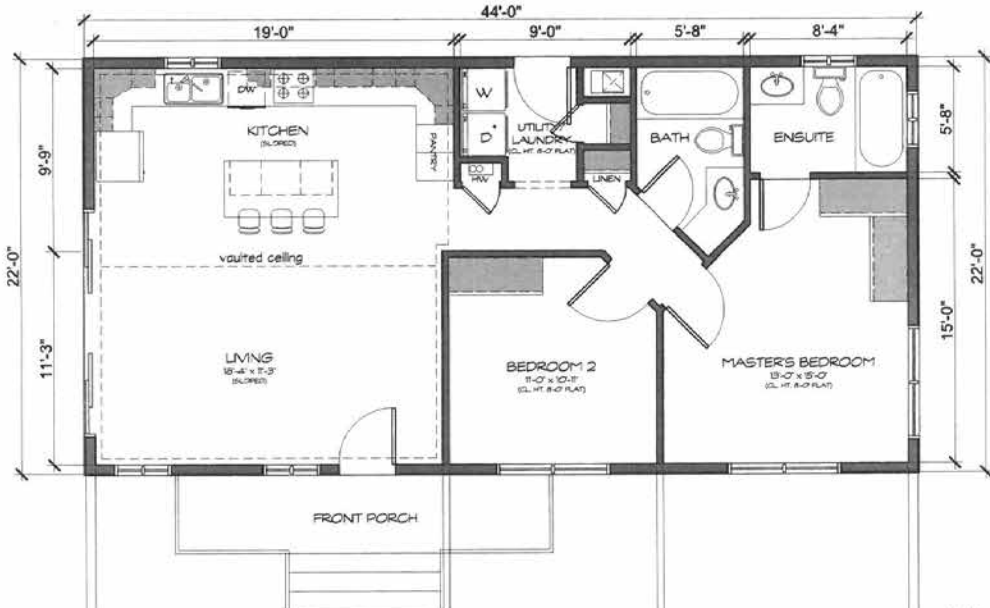


FLOOR PLANS

The Grafton - 16 x 40 (not including 10 Ft porch) - 640 Sq. Ft.



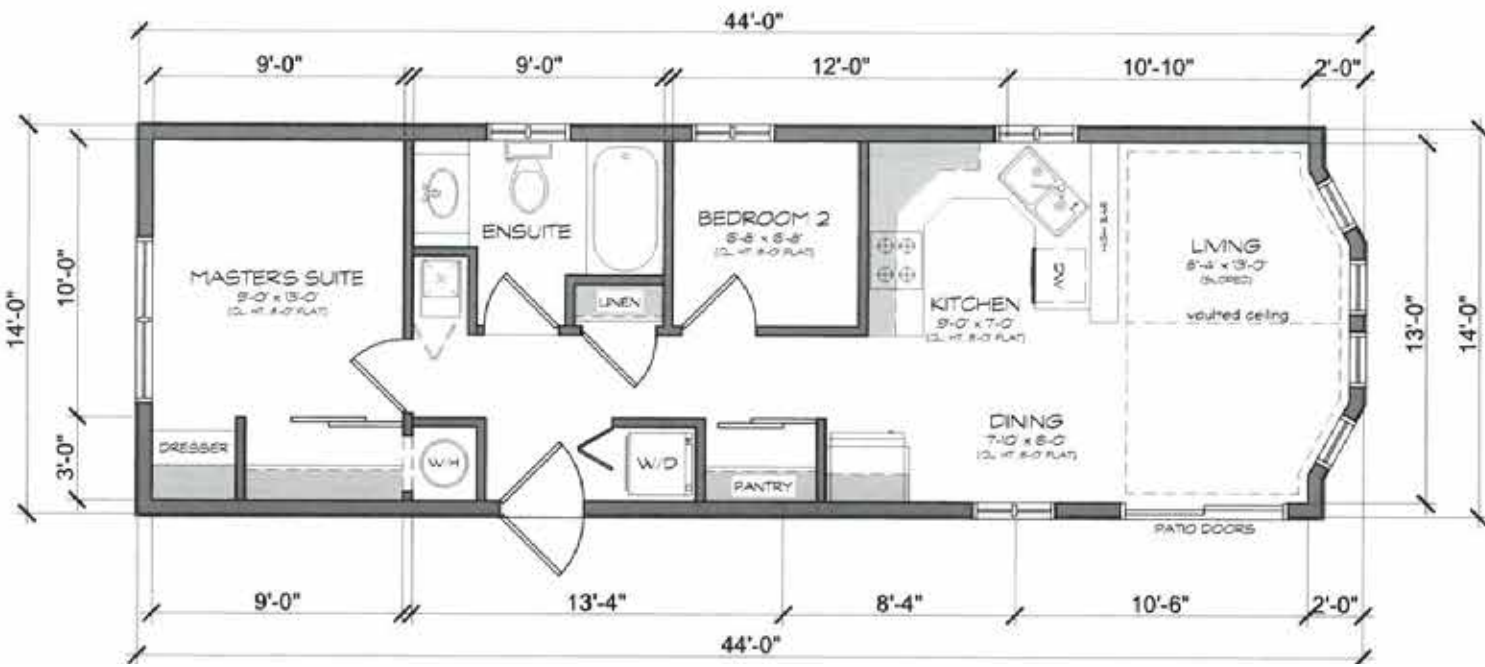
The Edward - 22 x 44 - 968 Sq. Ft.



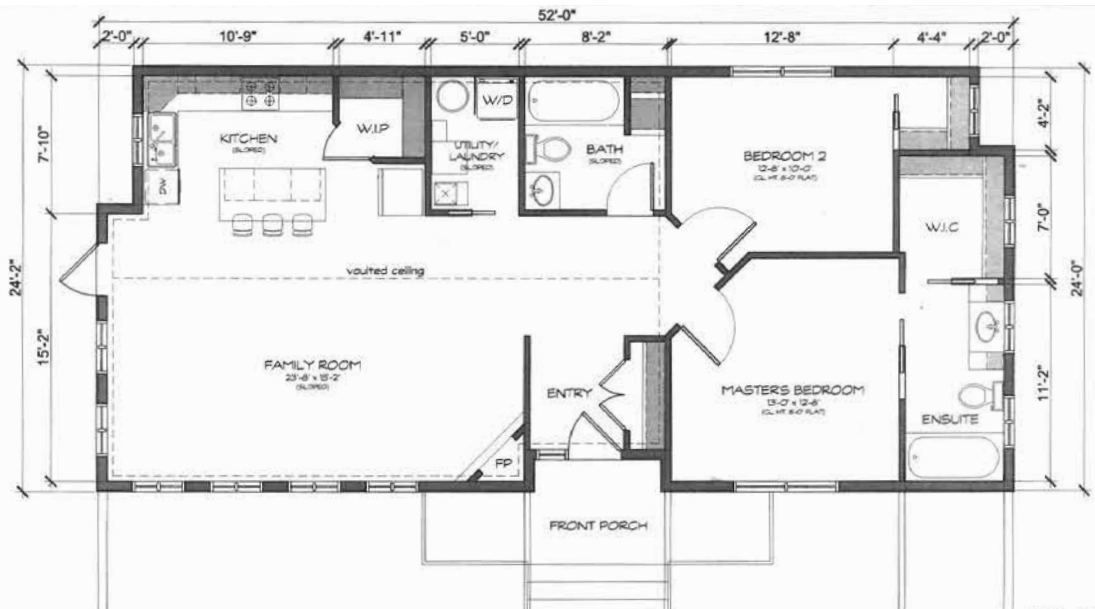
The Elegance - 28 x 76 - 2128 Sq. Ft.



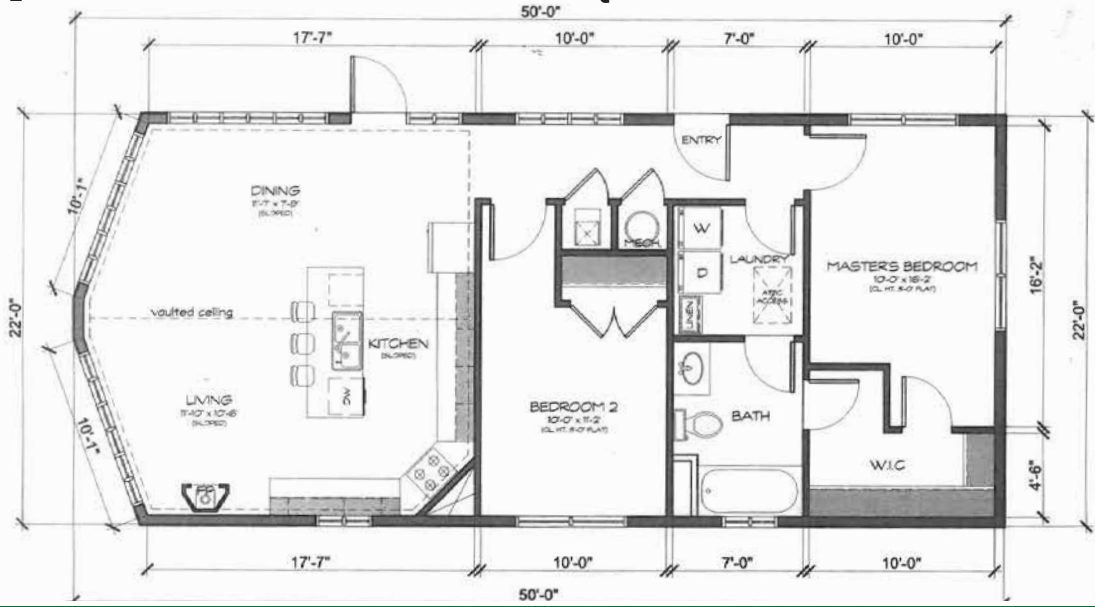
The Retreat - 14 x 44 - 616 Sq. Ft.



The Modern - 24 x 52 - 1248 Sq. Ft.

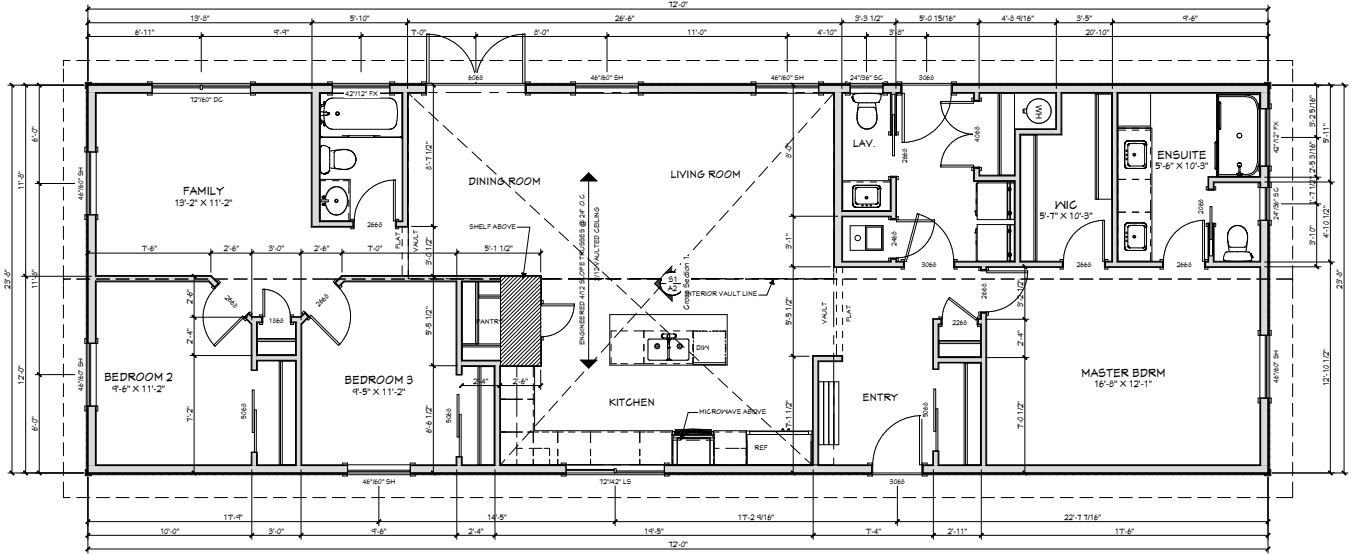


The Sandpoint - 22 x 50 - 1100 Sq. Ft.

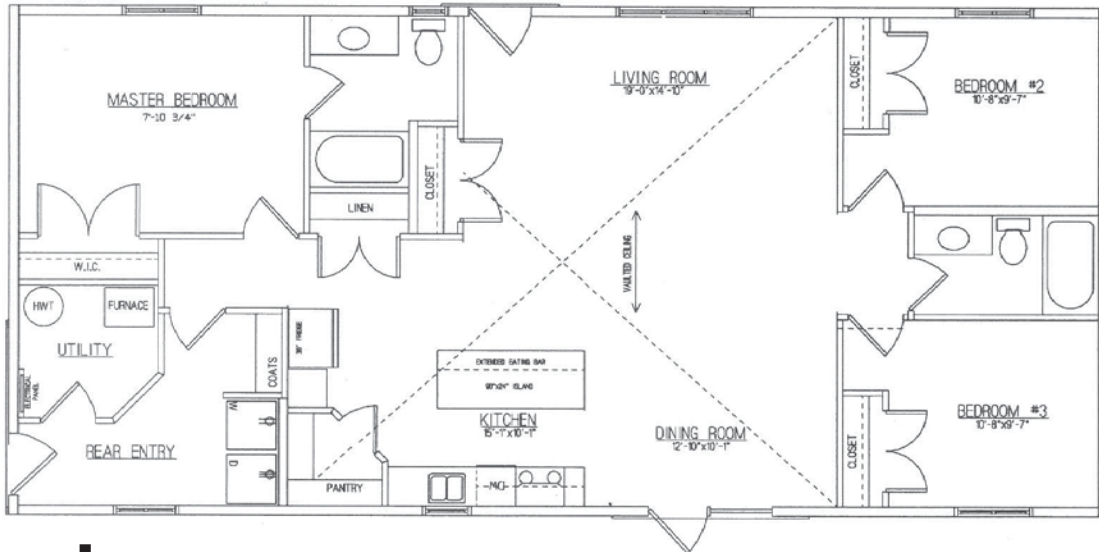


FLOOR PLANS

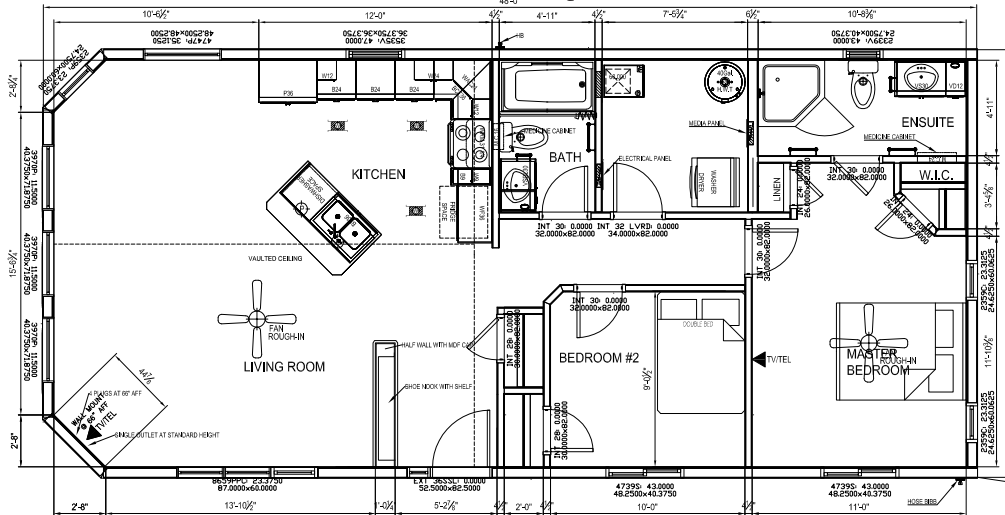
The Classic - 24 x 72 - 1728 Sq. Ft.



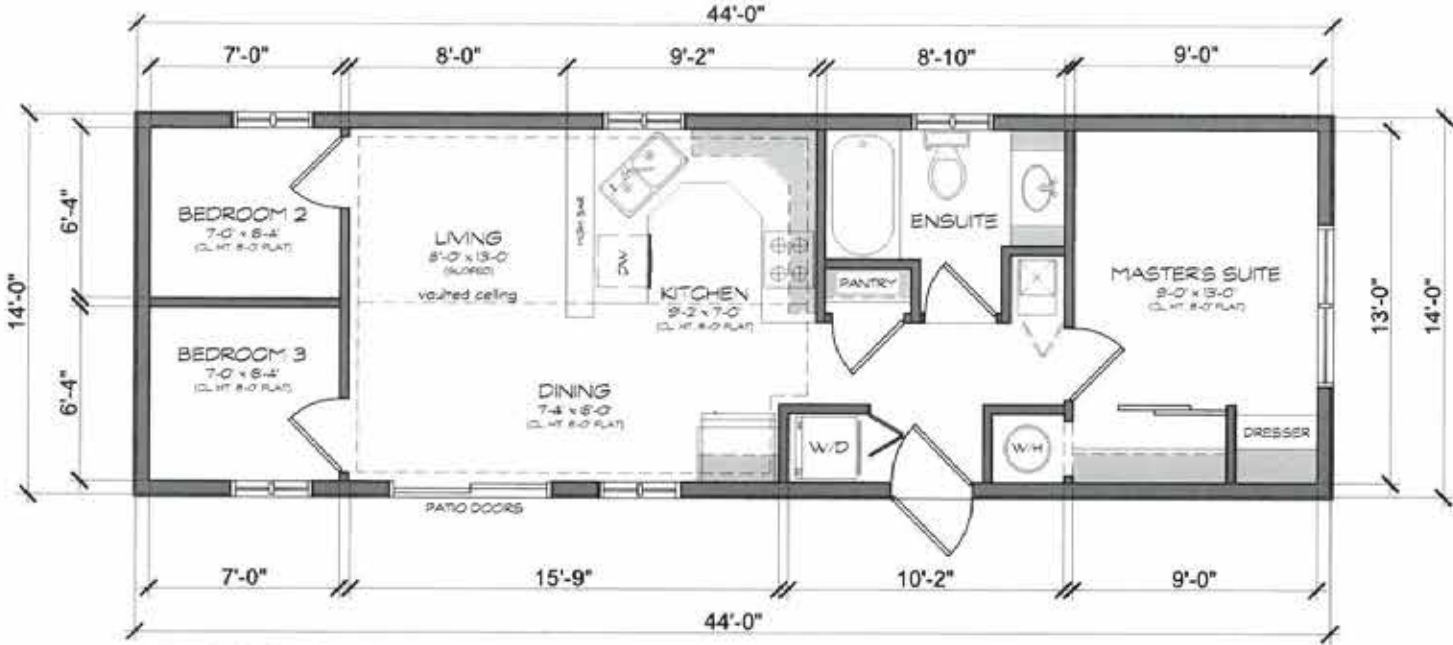
The Bowden - 26 x 56 - 1456 Sq. Ft.



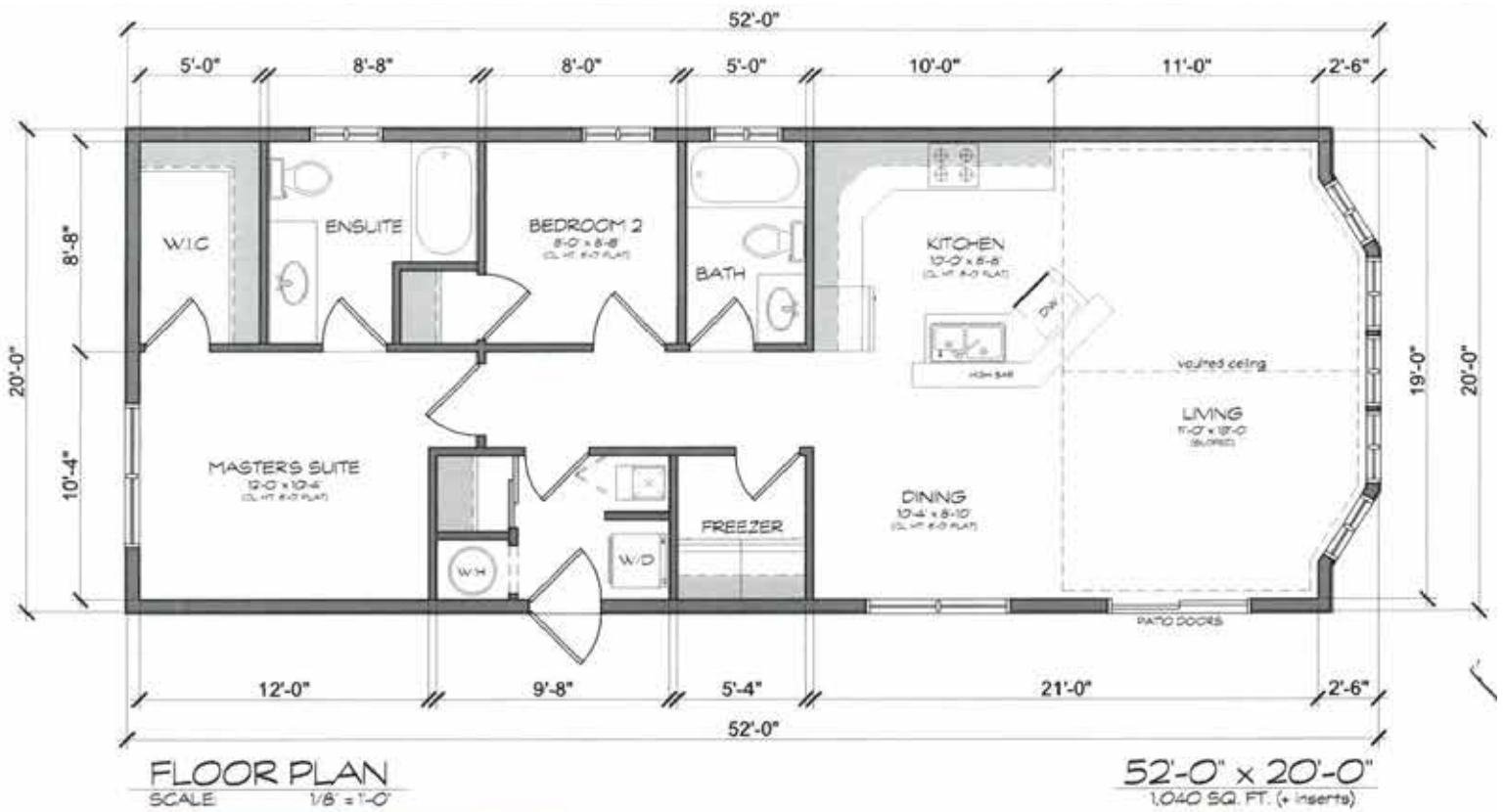
The Englander - 22 x 48 - 1056 Sq. Ft.



The Getaway - 14 x 44 - 616 Sq. Ft.



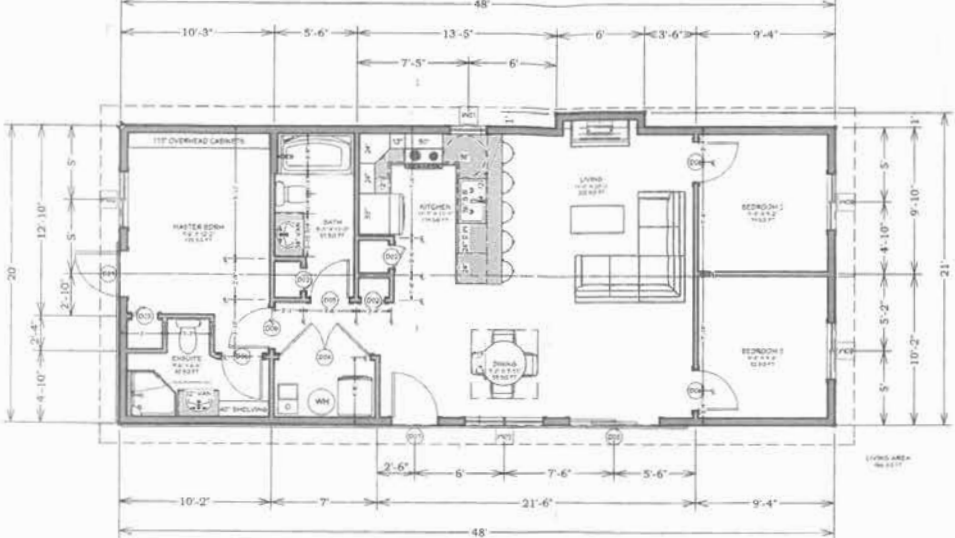
The Woodside - 20 x 52 - 1040 Sq. Ft.



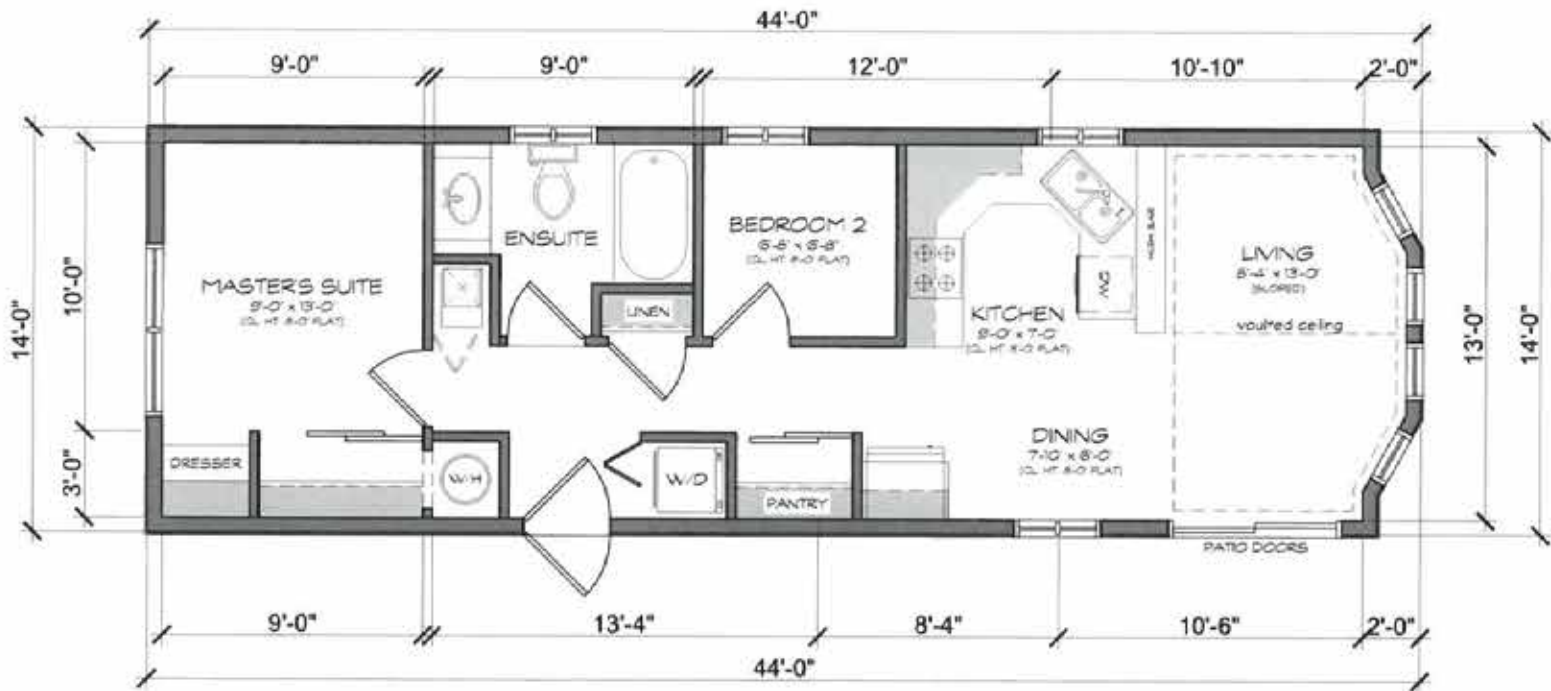
The Lakeside - 22 x 58 (not including 8 Ft porch) - 1276 Sq. Ft.



The Christie - 20 x 48 - 960 Sq. Ft.



The Parkside - 14 x 44 - 616 Sq. Ft.



Gallery





COUNTRYSIDE HOMES & RV

Standard Spec: Signature Series Modular Home

Roof

Limited Lifetime Warranty Asphalt Shingles
7/16 OSB Sheathing C/W H-Clips
Ice & Weather Shield at Roof Perimeter
Pre-Engineered Roof Trusses
R40 Pink Insulation
6-Mil Poly Vapor Barrier

Exterior Walls

Vinyl Siding
Air Barrier (House Wrap)
3/8 OSB Sheathing Glued and Stapled
2x6 Exterior Walls 16-inch on Center, At 8ft
High (Zone 7A/6)
R20 Fiberglass Batt Insulation (Zone 7A/6)
6-Mil Poly Vapor Barrier
Hurricane Straps

Floors

Pre-Engineered Open Web Floor Truss
LVL Rim Boards
23/32-Inch T&G OSB Floor Sheathing, Glued &
Screwed (or Equivalent.)
R40 Spray Foam

Interior Walls & Finish

½-Inch Drywall Board Primed and Painted
½-Inch Drywall Board on Ceiling, White Texture
2x4 Studs At 16-inch On Center
4-Inch Baseboards Throughout (MDF)
3 inch Flat Style Trim Over Doors
30-Inch Doors Pre-Finished Decorative
Vinyl Plank Floor
One Row Of Tile Around Tub/Shower

Cabinetry

Shaker Style Foil Profile Cabinets
Laminate Countertops
Solid Melamine Back Board Behind All cabinets
Soft Close Doors and Drawers

Fixtures

Stainless Steel Kitchen Sink
Comfort Height Toilet
White Ceramic Vanity Sinks
Toilet Paper Holder and Towel Bar

Heating And Ventilation

High Efficiency Furnace
30-Gauge Galvanized Plenum
80 CFM Bathroom Fan Connected to Humidistat
5-2 Digital Thermostat
Air Conditioning Rough-In

Plumbing

Plumbed For Dishwasher, Washer/Dryer
1 Cold Hose Bibs, As Per Plan
Shut Off Valves for Sinks and Toilets
Single Lever Kitchen and Vanity Fixtures
Water Line to Fridge
Manifold Waterline System
Single Piece Tub/Shower

Electrical

100 AMP, 110/220V Single Phase
Pre-Wired for Dishwasher
Heat Tape Plug Under Water Heater
GFCI Counter Plugs (20A)
Pot Lights Recessed in Soffits at Entries
Exterior Plug in Soffit
2 Exterior GFCI Plugs
Smoke Alarms / CO 2 Combo
5 Pot Lights in Kitchen

- many options available -

***Pick a plan
or completely create
your own. The possibilities
are endless!***

Your first choice for Park Models, Custom Cottages, and Modular Homes.



**COUNTRYSIDE
HOMES & RV**

2205 24A Crescent
Bowden, Alberta T0M 0K0
(403) 224-2255

CountrysidehomesRV.com