



RTM Series

(Ready to Move)

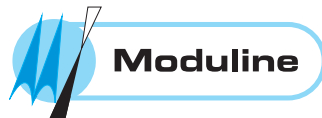
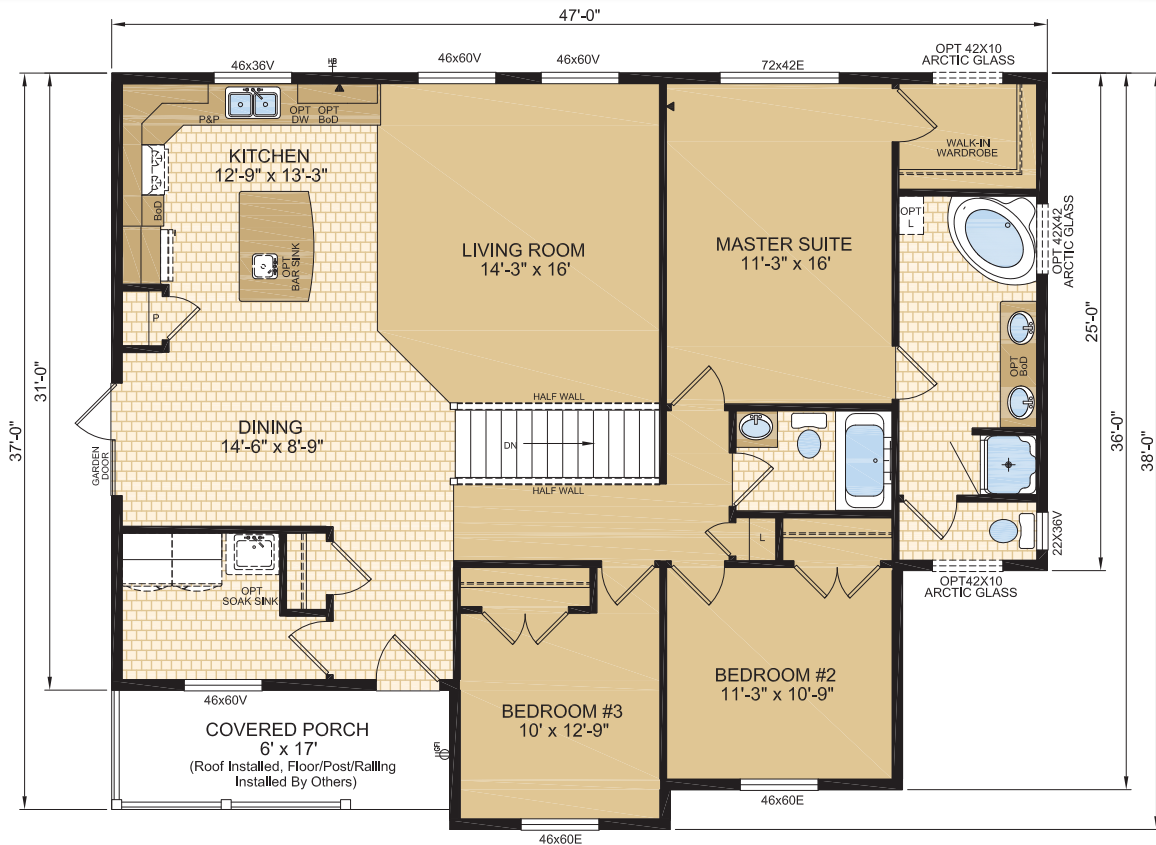






RTM Series

(Ready to Move)

SEBRING
MODEL 50150
47' X 38' 1549 SQ. FT.
3 BEDS - 2 BATHS



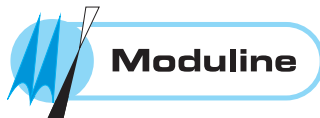
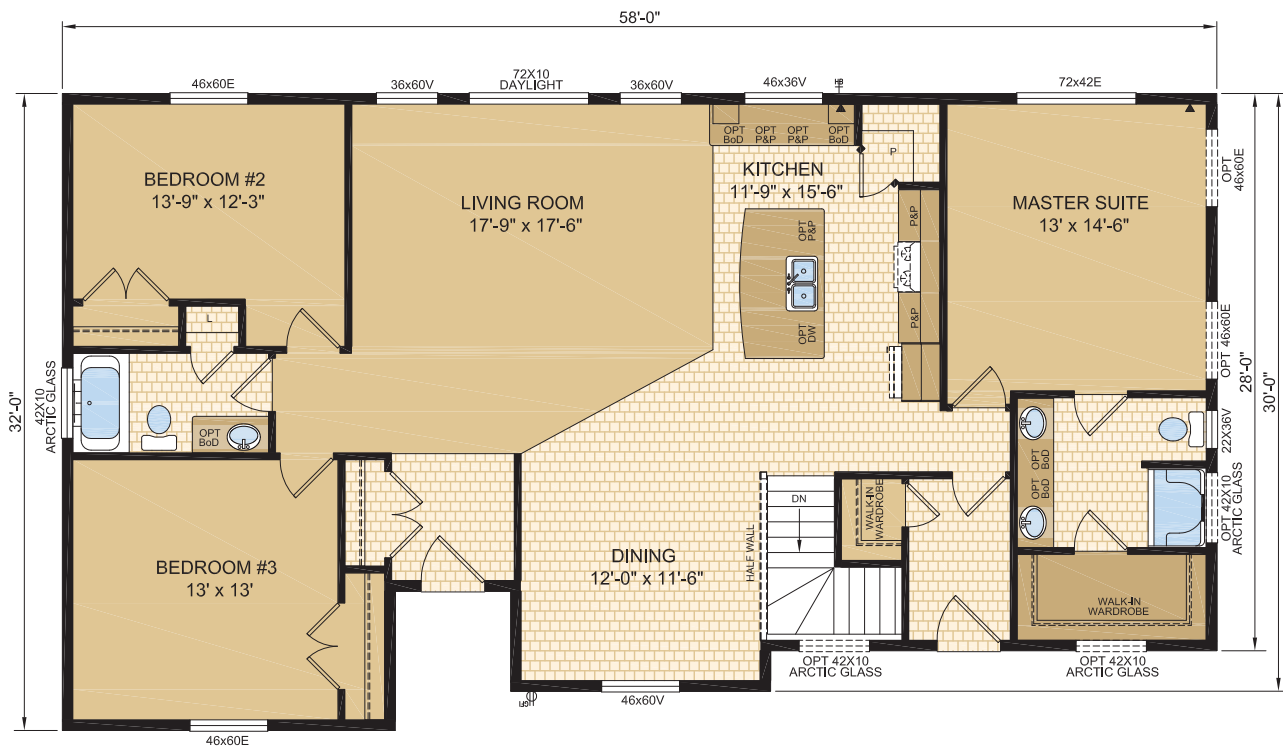
Follow us:  



RTM Series

(Ready to Move)

SUNBRIAR
MODEL 50200
58' X 32' 1701 SQ. FT.
3 BEDS - 2 BATHS



Follow us: [f](#) [t](#)



RTM Series

(Ready to Move)

SALCEDO
MODEL 50250
54' X 36' 1895 SQ. FT.
3 BEDS - 2.5 BATHS



Follow us: [f](#) [t](#)



RTM Series

(Ready to Move)

GENERAL SPECIFICATIONS

Homes are built to meet or exceed CSA-A277 Zone 7A Building Codes

SUPERIOR CONSTRUCTION

- 1 Year Manufacturer's Warranty (10yr Available Through Retailer)
- Engineered 11-7/8" I Joist Floor System
- 23/32" T&G OSB Floor Decking
- 1/4" Proboard Underlayment Beneath Lino Areas
- 7/16" OSB Roof Sheathing w/ H-Clips
- 3/8" Exterior Wall OSB Sheathing
- Insulation R Values: Walls R-22, Roof R-60
- 6 mil Poly Vapour Barrier
- Engineered Roof Trusses @ 24" O.C.
- 5/12 Roof Pitch
- 2"x6" Exterior Walls @ 24" O.C.
- 2"x4" Interior Walls @ 16" O.C.

MAINTENANCE FREE EXTERIORS

- Whole House Wrap
- Vinyl Lap Siding
- 24" Perimeter Vented Eaves
- IKO Architectural Asphalt Shingles
- Synthetic Underlayment
- 6" Metal Fascia / Metal Soffit
- 36" Decorative Insulated Entry Doors w/Peephole
- Keyed Alike Deadbolts
- White PVC Double Pane (Double Low E & Argon Filled)
- Window Sizes Plan Specific
- Obscure Bath Window (where applicable)
- Rough-In for Door Chime at Front Door

TASTEFUL INTERIORS

- Cushioned Linoleum Flooring (Bathrooms, Kitchen, Dining, Laundry)
- Plush Carpet w/ 7lb Underlayment (Bedrooms/Den, Living Room, Hallways)
- 1/2" Primed and Painted White Drywall with Square Corners
- Painted White Raised Panel Interior Passage Doors
- Painted White Contemporary Moulding Package
- 9' Flat Ceiling Throughout (Spantex Texture)
- Light in Bathroom Above Mirror
- Bedroom and Hall Ceiling Lights
- Solid MDF Painted White Closet Shelving w/Rod
- Pot Lights in Kitchen (5 Total)
- Dining Room Light
- LED Light Bulb Package
- Decora Light Switches / Receptacles
- Paint - White
- Lever Style Door Handles
- Full Wall or Half Wall at Stairwell Opening (Model Specific)

BRIGHT BEAUTIFUL KITCHEN

- Frameless Cabinets w/Adjustable Shelving
- Crown Moulding on Cabinets
- Soft Close Doors and Drawers
- Standard Door Pulls
- Walk-In Pantry or Full Height Pantry
- Double Stainless-Steel Sink
- Single Lever Pull Out Faucet w/Veggie Sprayer
- Laminate Counter Top with Single Row Tile Backsplash
- 1- Bank of Drawers
- Rough-In for Vented Rangehood
- Appliances Optional

SPACIOUS BATHROOMS

- One Piece Fiberglass Oval Tub and Separate Shower Unit in Ensuite (Most Models)
- One Piece Tub/Shower Unit in Main Bath
- Beveled Vanity Mirror Above Sinks
- Single Lever Pressure Balanced Faucet on Tub/Shower Units
- Single Lever Faucet on Vanity Sinks
- Low Volume Flush Toilets
- Low Sone Bath Fan(s) on Separate Switch
- White Vanity Sink
- Laminate Counter Top with Single Row Tile Backsplash
- Curved Shower Rods on Tub/Shower Units

UTILITIES

- 100 Amp Electrical Panel Mounted in Floor for Basement Hookup
- Wired CO/Smoke Detectors Main Floor & Secondary (If Applicable) Prewire in Basement
- 1-Exterior GFI Receptacle
- GFI Protected Receptacles in Bathrooms
- AFCI Protected Receptacles (as required by code)
- 2-Communication Conduits
- Coach Lights at All Exterior Doors
- Covered Porches/Recessed Entries Receive Pot Light(s) ILO Coach
- Rough-In for Door Chime at Front Door
- 5 Wire Rough In for Thermostat
- Shut Off Valves on All Fixtures
- All Waterlines Stubbed in Floor Cavity
- All Plumbing Stubbed in Floor Cavity
- Rough-In for Radon gas venting (Basement Models)
- Register and Return Air Rough-In with Covers
- Ducting, Plenum and Registers Not Provided

Canadian Home Builders' Association



10 YEAR



Progressive HOME WARRANTY



1421 Brier Park Crescent, Medicine Hat, Alberta T1C 1T8

Phone: (403) 527-1555 Fax: (403) 528-4486

In a continued effort to meet the challenges of product improvement, we reserve the right to modify plans, specifications and features without prior notice. Some homes may show optional items which are not standard. Please consult your dealer representative for details.

Square footage and room sizes are approximate. Printed in Canada 500/10/18