



m a n s u r a

M

MULTI-SECTION HOMES

*Superior
Style*



*Everyday
Comforts*

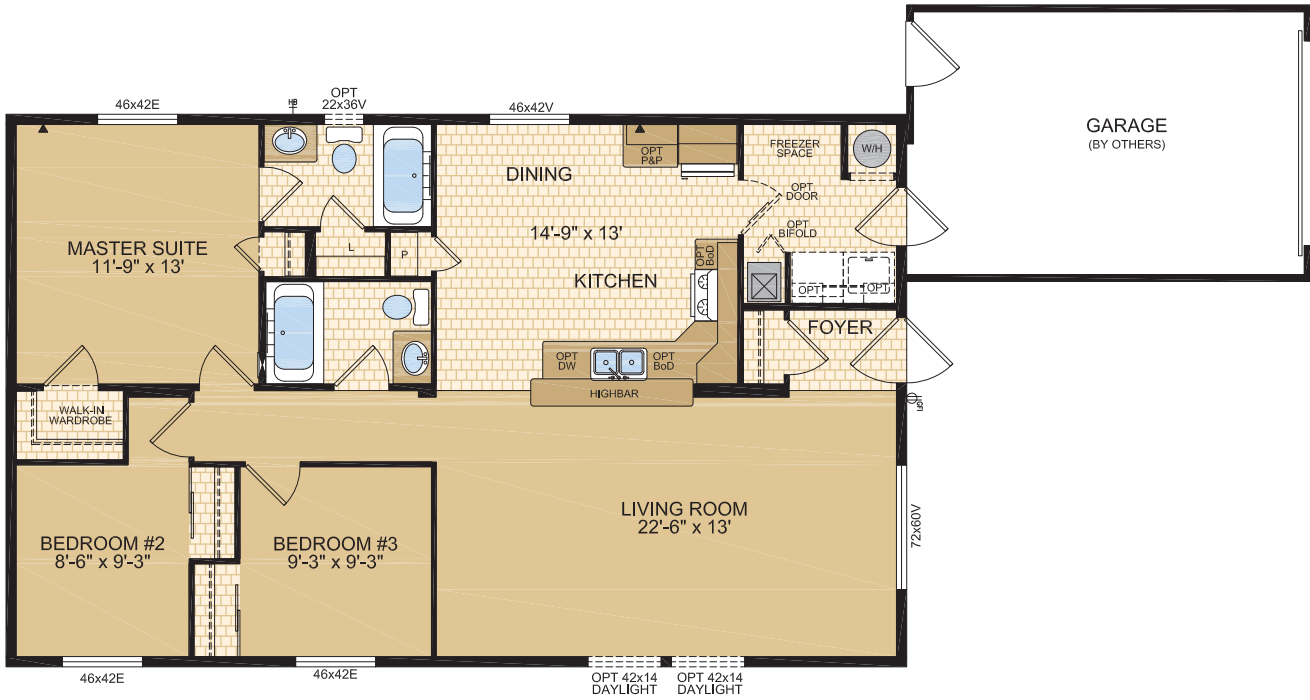
Follow us:  

www.modulinemedicinehat.com

Queenston

Model 28132

27 x 44 • 1188 sq. ft.

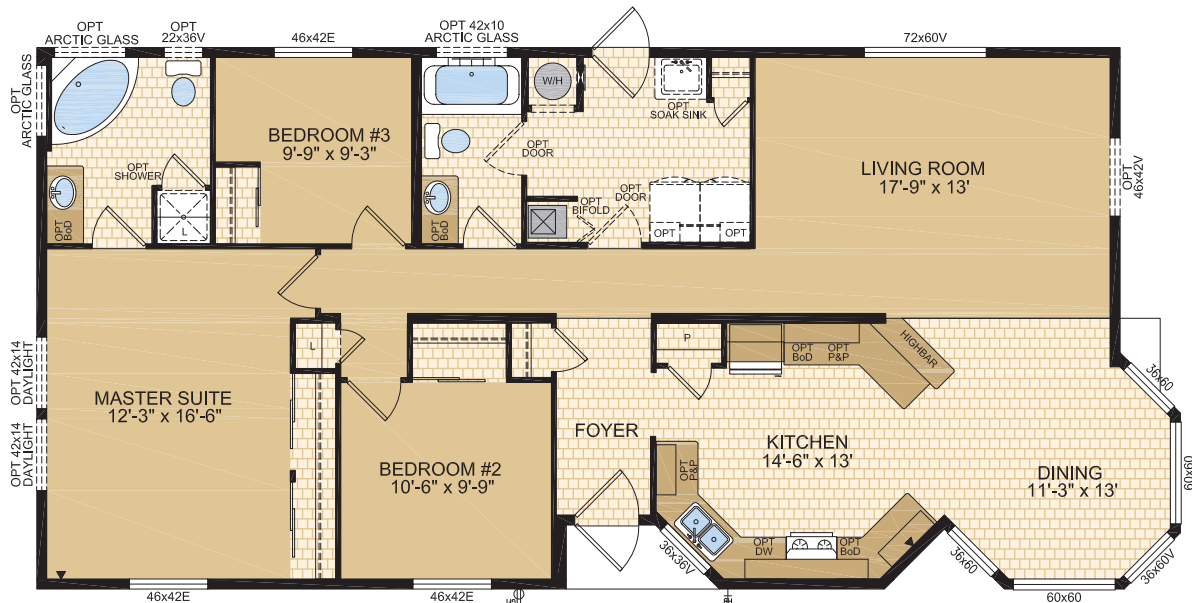
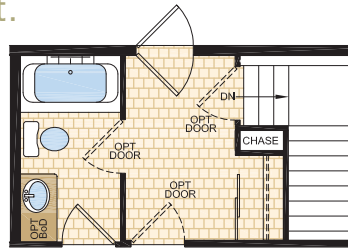


Montclair

Model 28138

27 x 54/56 • 1493sq. ft.

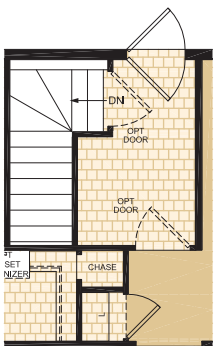
Optional Foundation



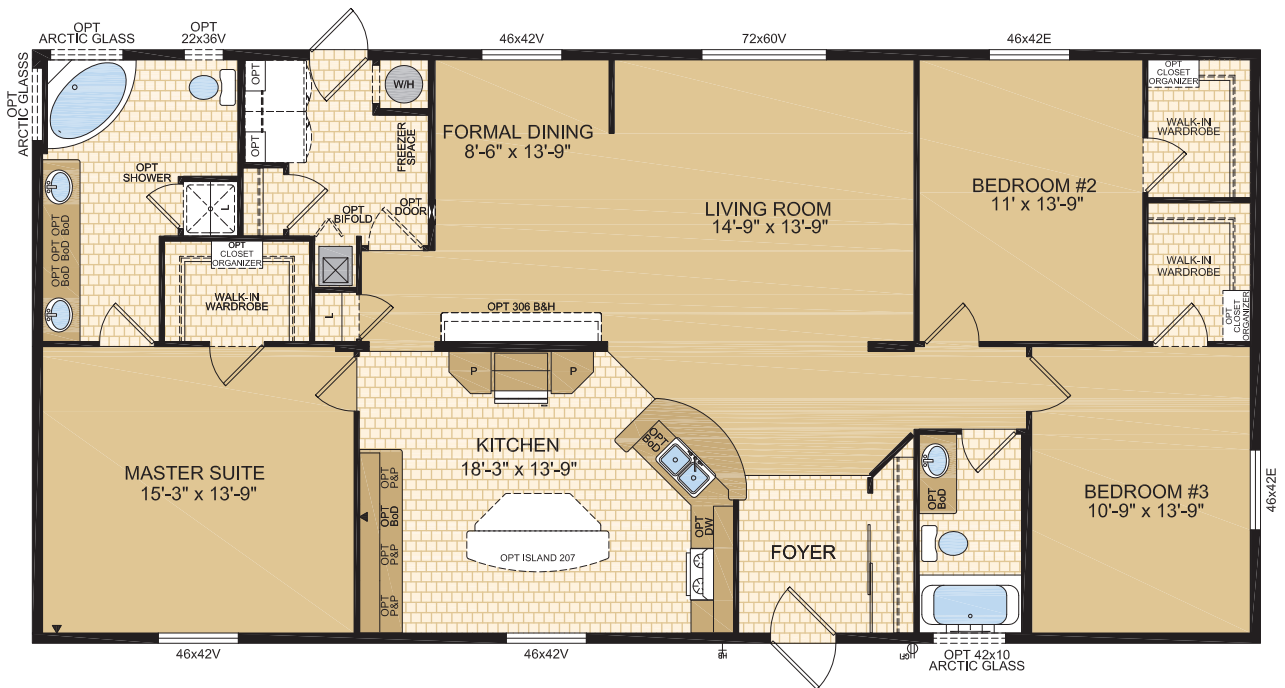
Oakhurst

Model 30280

29 x 60 • 1740 sq. ft.



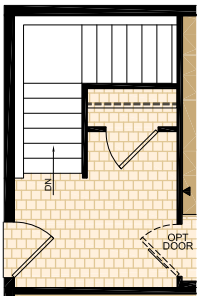
Optional Foundation



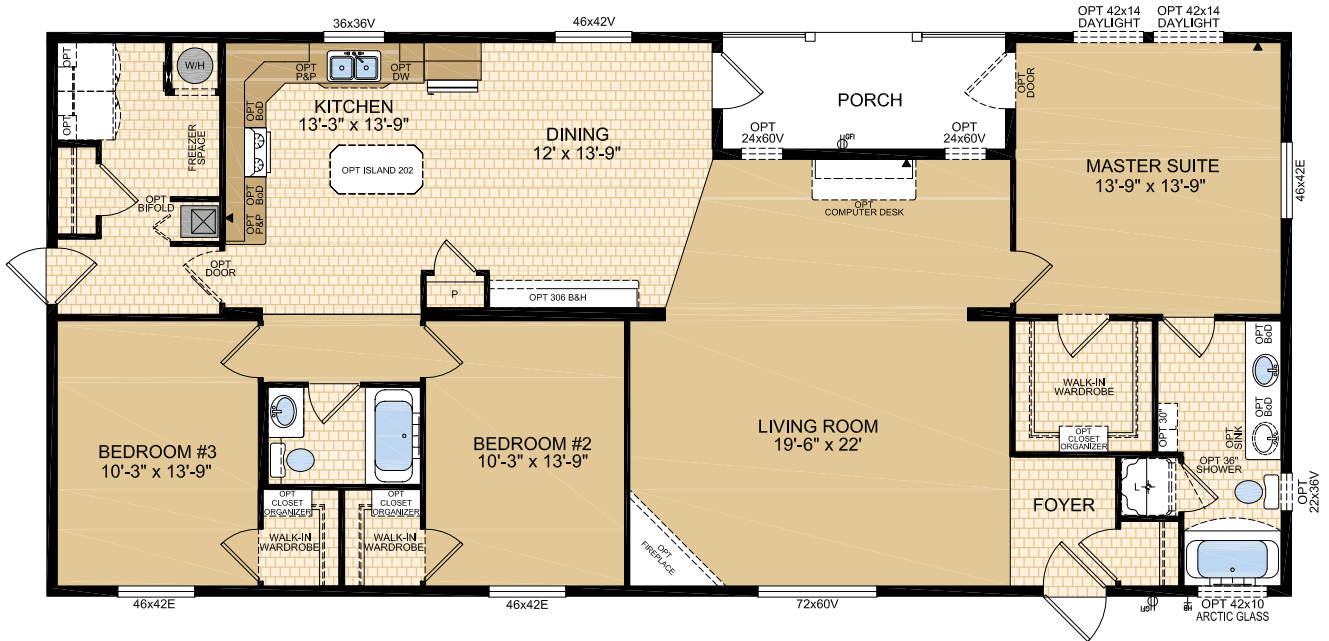
Sherbrooke

Model 30304

29 x 64 • 1856 sq. ft.



Optional Foundation

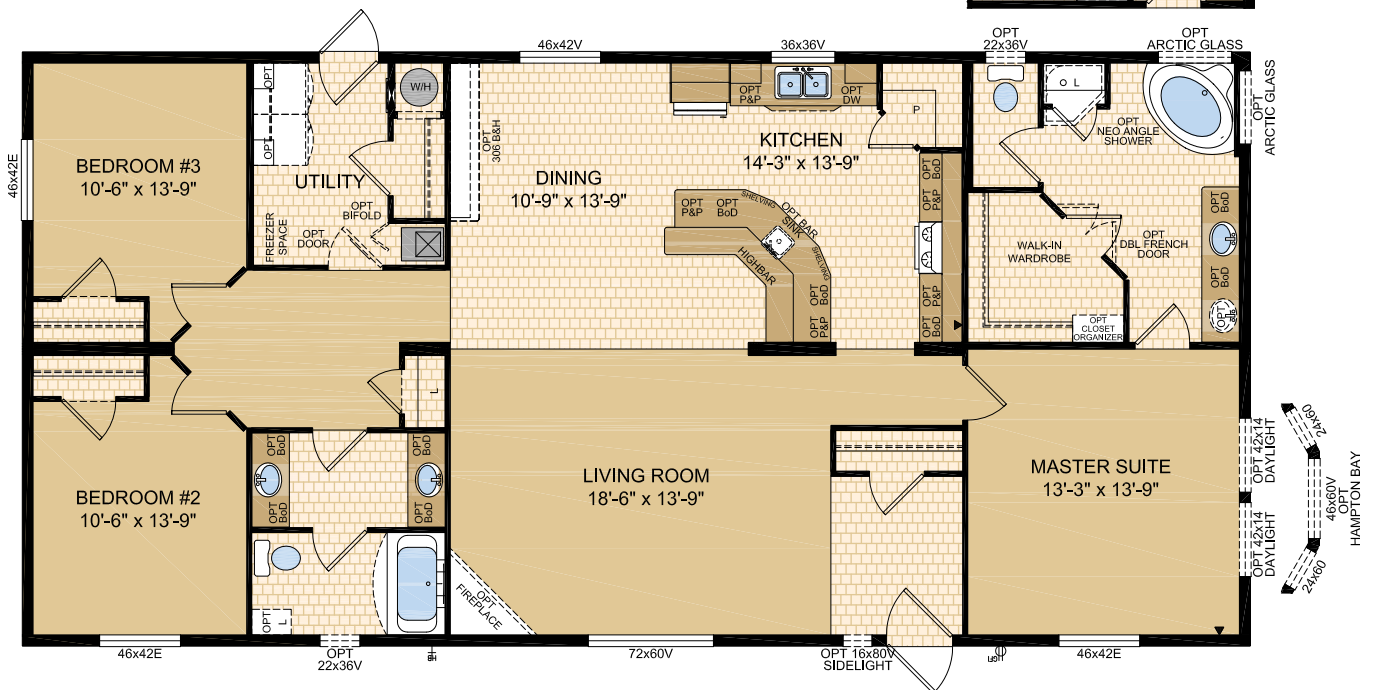
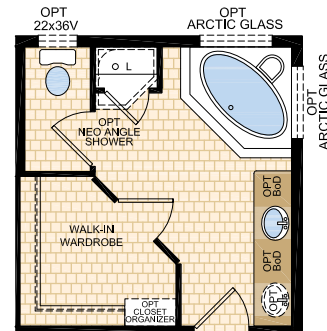


Lewiston

Model 30305

29 x 60 • 1740 sq. ft.

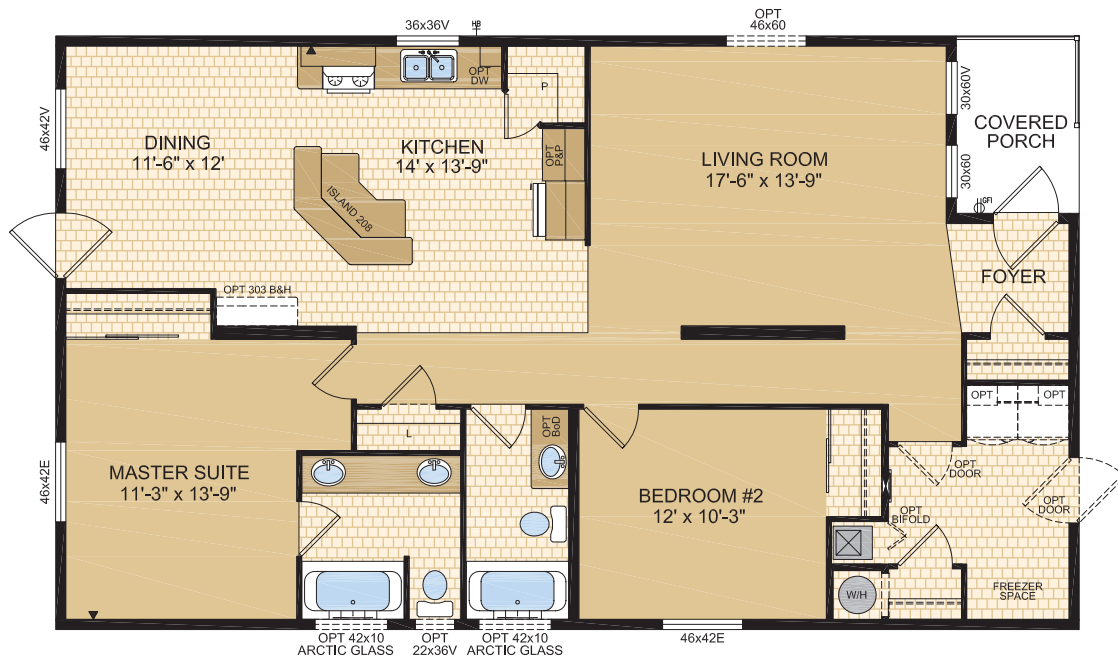
Optional Ensuite Layout



Kitsalino

Model 30610

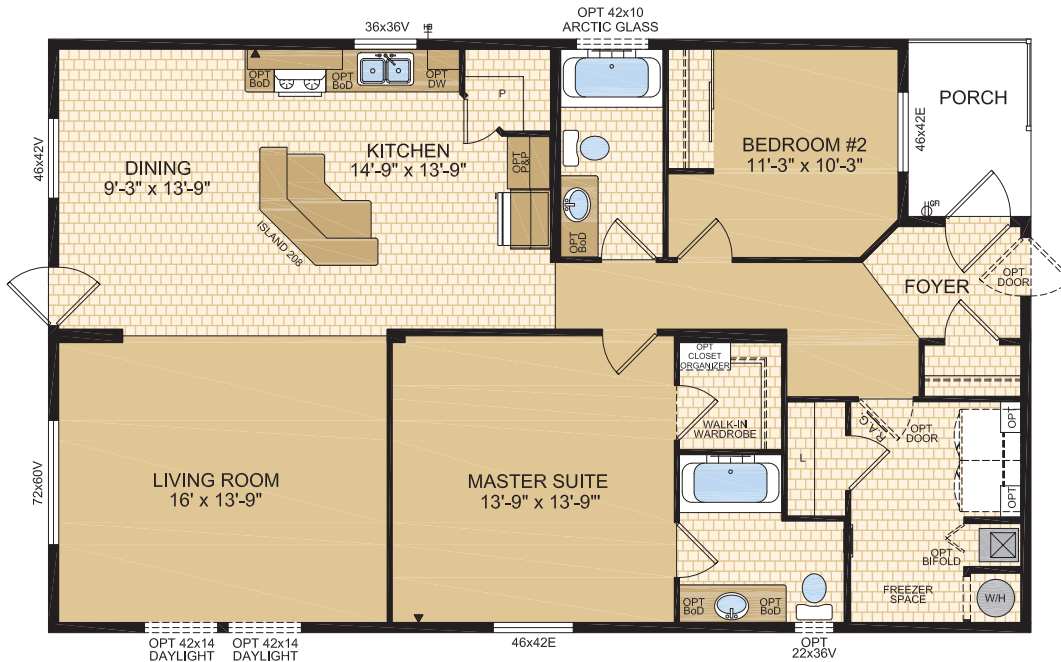
29 x 50 • 1450 sq. ft.



Marpole

Model 30611

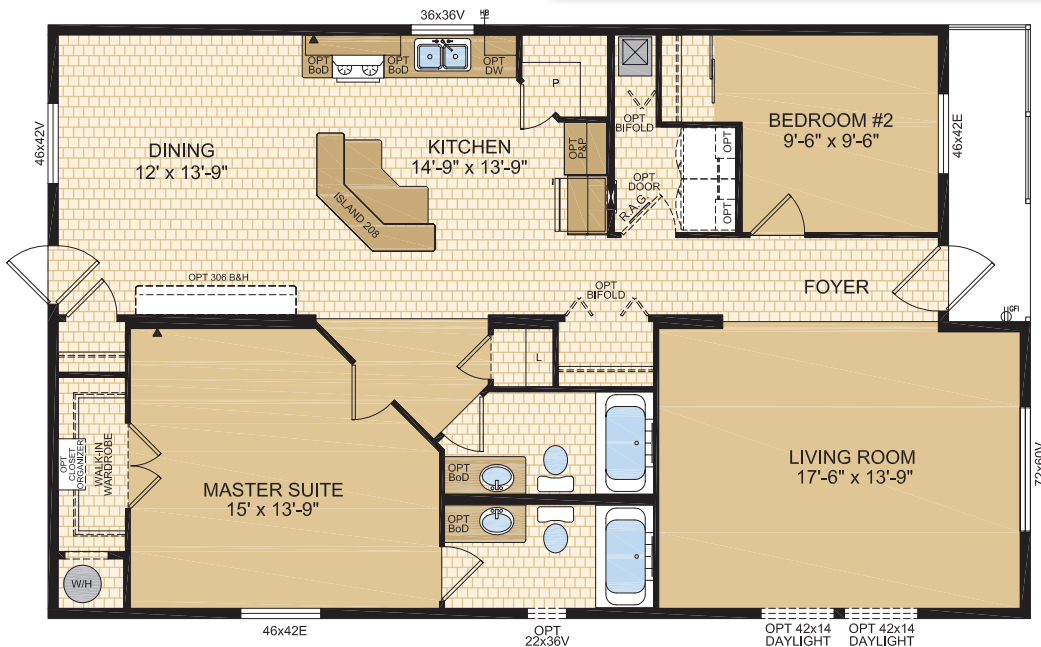
29 x 48 • 1392 sq. ft.



Townsend

Model 30612

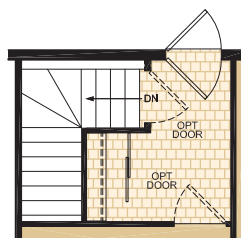
29 x 48 • 1392 sq. ft.



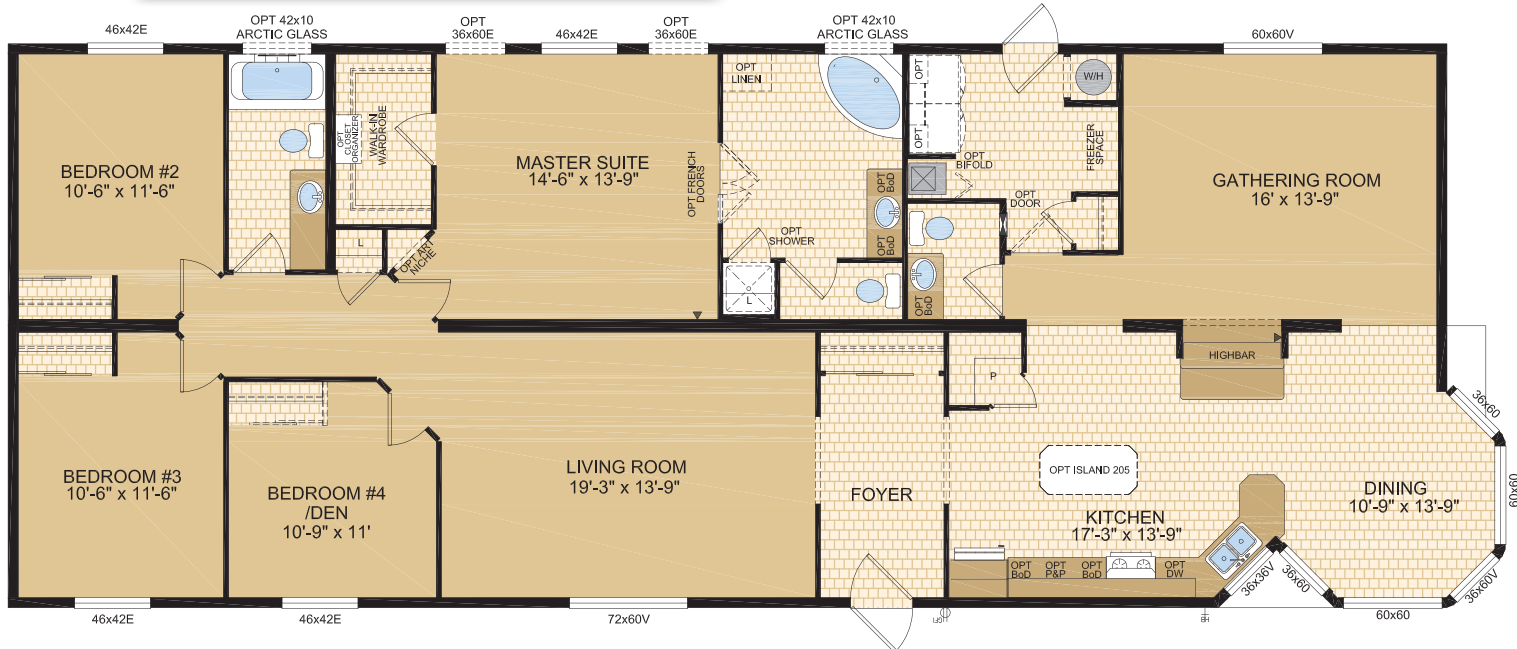
Seabrook

Model 30688

29 x 74/76 • 2204 sq. ft.



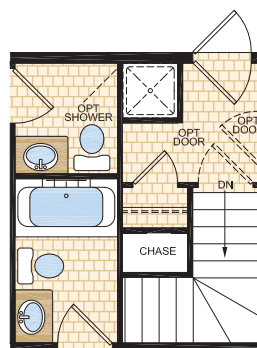
Optional Foundation



Saratoga

Model 30692TS

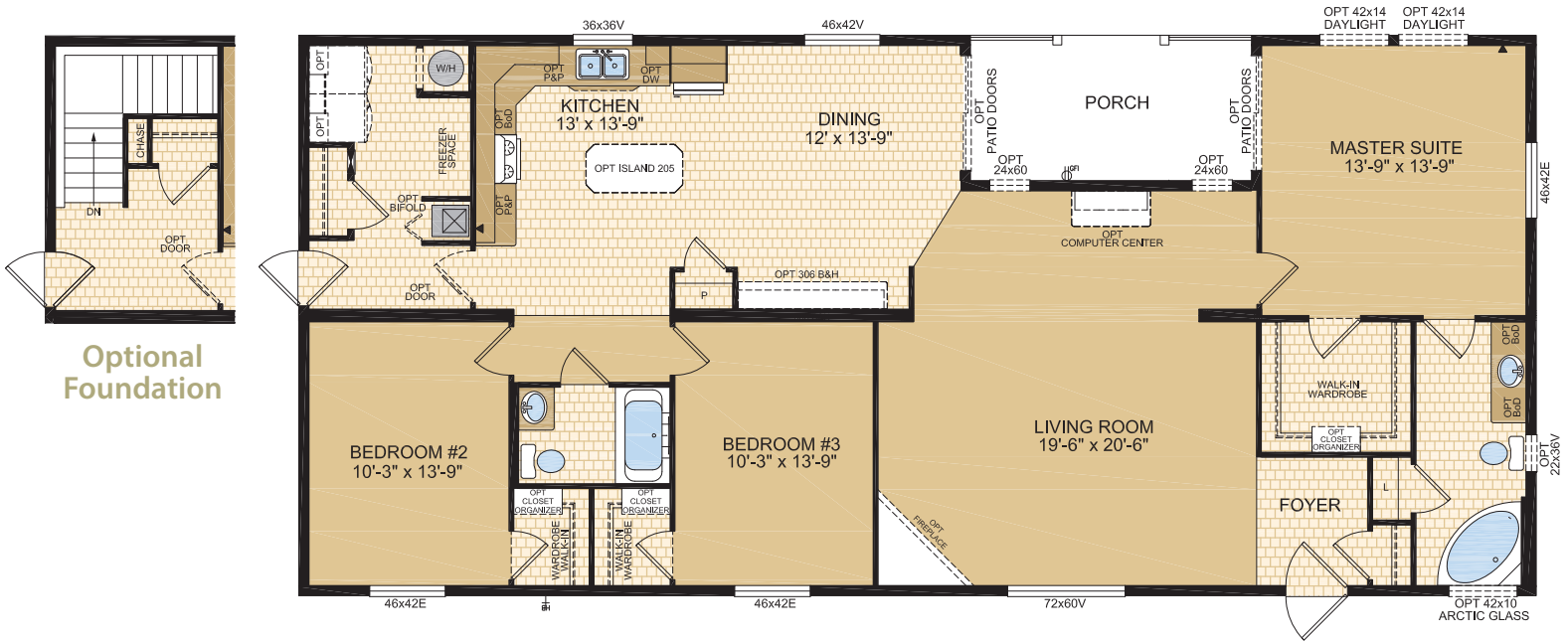
29 x 38 • 1102 sq. ft.



Optional Foundation

Ridge Manor

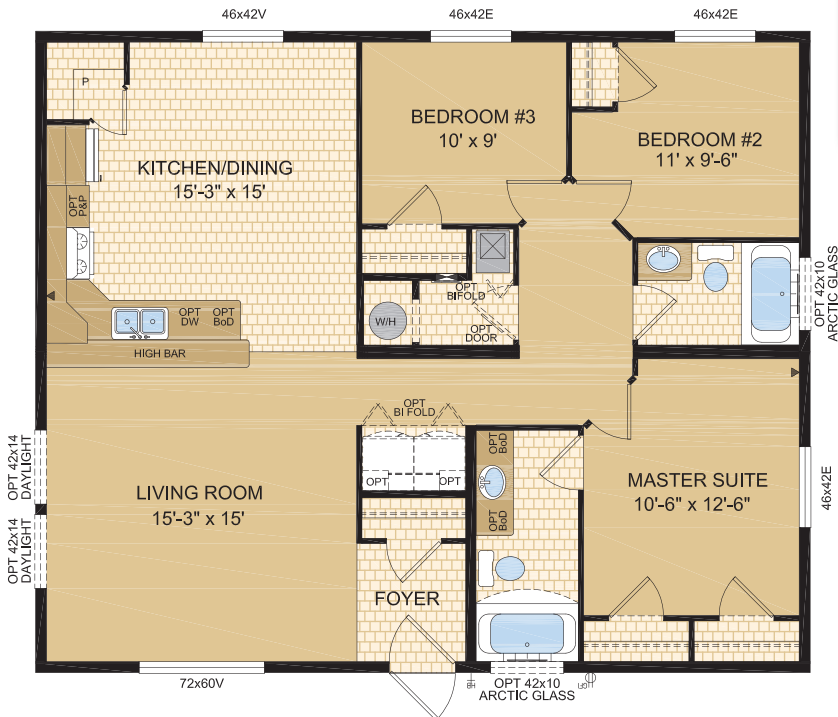
Model 30695 29 x 64 • 1856 sq. ft.



Optional Foundation

Wedgeport

Model 32300TS 32 x 38 • 1216 sq. ft.



Optional Foundation

STANDARD FEATURES & SPECIFICATIONS

GENERAL CONSTRUCTION

- Built to the A-277 code Zone 7A
- 8' Ceilings
- Cathedral ceiling in living, dining area & kitchen
- Maintenance free vinyl lap siding & metal fascia
- 18" Extended eaves (*All 4 sides*)
- Architectural asphalt shingle roof (*limited lifetime warranty*)
- 7/16" roof sheathing
- Engineered full 4/12 hinged roof trusses
(*Fixed roof available with truss foot option on 30' wides or less; may require over height permit*)
- Engineered full 4/12 pitch roof trusses (*on 30' wides or larger*)
- Textured (*primed*) gyproc ceiling
- Exterior walls built 2"x6" and strengthened with 3/8" OSB sheathing on inside and outside of wall
- Shipping wall included on T/S models
- 19/32" T&G OSB Floor Decking glued and screwed
- 2"x10" Floor joists @ 16" o.c. on 30'/32'/40' wides
- Heavy tubular steel frame
- Decorative insulated entry doors with dead bolt and peephole (*36" front door*)
- Coach lights at all exterior entrances
- Screen doors on front and rear entrances
- Residential 1.6U-value, maintenance free Low E Argon filled (*R-5*) PVC windows c/w vinyl sills, screens and security locks
- Exterior GFI electrical outlet & frost free water tap
- Insulation meets zone requirements as per zone 7A/7B/8 of the 9.36 Energy Code: Floors R-48, Walls 22 & Ceiling R-40 (*min*)

TASTEFUL INTERIORS

- Plush saxony carpet in living room, great room, family room, den, hall and all bedrooms (*certain models*)
- Quality cushioned linoleum flooring all other areas
- Coordinating window valance over 2" white faux wood blinds (*inset in window*) in all areas except bathrooms
- Pre-finished interior passage doors in Crystal White Colour

BRIGHT, BEAUTIFUL KITCHENS

- Deluxe tile backsplash
- Window over kitchen sink (*most models*)
- High Bar Kitchen (*select models*)
- Deluxe 30" electric range
- Exterior vented range hood with light
- 19 cubic foot, 2-door, frost free refrigerator
- Double stainless steel sink
- Spacious pantry (*selected models*)
- Doweled, full modular cabinetry w/crown moulding
- Three distinctive colors of cabinet doors to choose from with matching moulding and trim colour

SPACIOUS BATHS

- One-piece quality fiberglass tub and shower units
- Curved Shower rods in all tubs
- Expansive vanity mirrors with Theatrical lights
- Deluxe tile backsplash
- GFI receptacle
- Power bath fan(s)
- Single lever faucet on tub/shower unit
- 36" vanity height in ensuite

UTILITY SERVICES

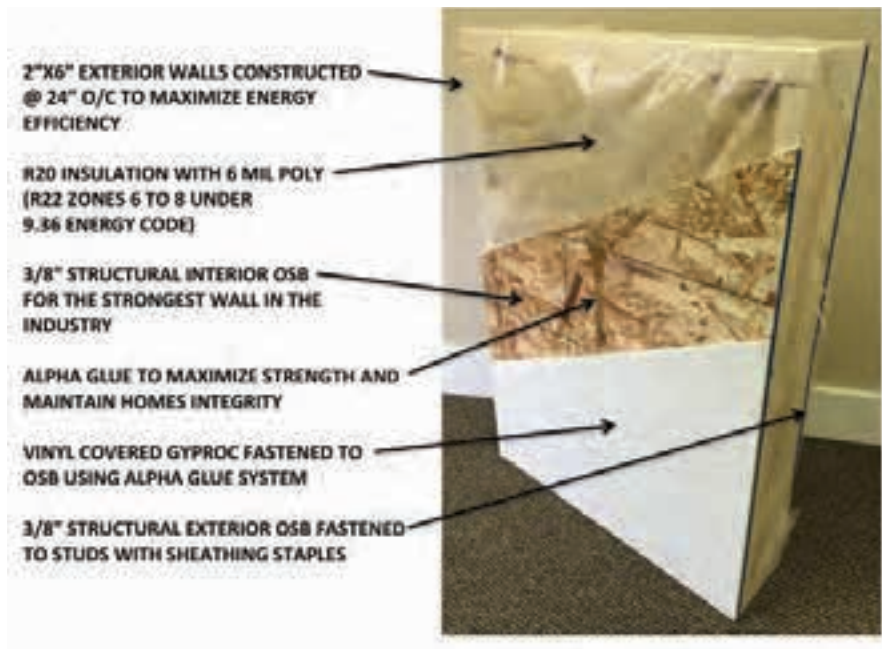
- 100 amp electrical panel
- Programmable thermostat
- Upgrade Building envelope to meet 0.20 L/M2S 3m insulated water lines on hot and cold sides at water heater
- High efficiency (*95.1+AFUE*) gas furnace with condensation pump
- 33 Imp. (*40US*) gallon natural gas water heater
- Wired, plumbed and vented for washer and dryer
- Shelf above washer and dryer
- Primary exhaust fan c/w dehumidistat and switch
- CO/Smoke Detector(s) c/w battery backup
- Smoke detectors in bedrooms
- Arc Fault protection in areas required by code
- GFI protected receptacle for heat tape
- Dedicated receptacle in "Freezer Area"
- Communication outlet (2) – Kitchen and Master Bedroom



www.modulinemedicinehat.com

Exterior Wall Construction

Best Standard in the Housing Industry!



“We surpass the competition!”



Follow us: 